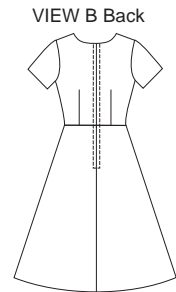
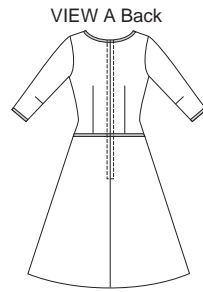




Misses' dresses have A-line skirt, fitted bodice with darts, and zipper closure in back. View A has dropped waist, three-quarter length sleeves, and contrast binding at neckline, waist and bottom of sleeves. View B has short sleeves and neckline finished with facing. View B is shown with purchased belt.



KWIK•SEW®
3380 price

MISSES' DRESSES DESIGNED FOR LIGHT TO MEDIUM WEIGHT WOVEN FABRICS
 Sizes: XS-S-M-L-XL Suggested Fabrics: Cotton, cotton types, linen, silk types, crepe, rayon blends

Size	XS	S	M	L	XL	
Finished Length from Natural Waist						
View A & B	26" (66 cm) – All Sizes					
Material Required: Fabric requirement allows for nap, one-way design or shading. Extra fabric may be needed to match design or for shrinkage.						
Fabric 60" (152 cm) Wide						
View A	2 (1.85)	2 (1.85)	2 1/4 (2.10)	2 3/8 (2.20)	2 1/2 (2.30)	yd (m)
View B	1 3/4 (1.60)	1 7/8 (1.75)	2 (1.85)	2 1/8 (1.95)	2 1/8 (1.95)	yd (m)
Fabric 45" (115 cm) Wide						
View A	2 3/4 (2.55)	2 3/4 (2.55)	3 1/8 (2.85)	3 1/4 (3.00)	3 3/8 (3.10)	yd (m)
View B	2 3/8 (2.20)	2 1/2 (2.30)	2 5/8 (2.40)	2 7/8 (2.65)	3 (2.75)	yd (m)
Contrast 45" (115 cm) or 60" (152 cm) Wide						
View A	3/4 (0.70)	7/8 (0.80)	7/8 (0.80)	1 (0.95)	1 (0.95)	yd (m)
Fusible Interfacing 24" (60 cm) Wide						
View B	1/4 (0.25)	1/4 (0.25)	1/4 (0.25)	1/4 (0.25)	1/4 (0.25)	yd (m)
Notions: Thread, one 22" (55 cm) zipper.						