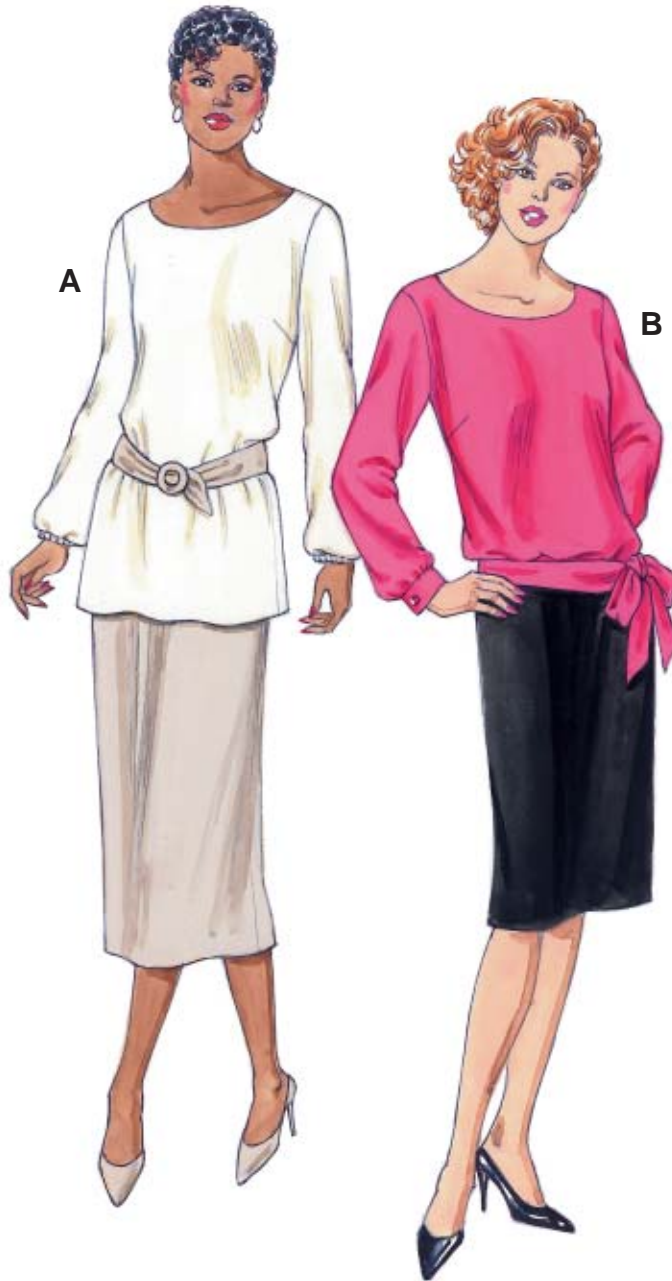




Misses' tops and skirts. Pullover tops have boat neckline. View A has full-length sleeves with optional elastic in casing at wrist. View B has full-length sleeves with cuffs, bottom edge is slightly gathered to waistband with extending ties that tie on left side of front. Fitted straight skirts have darts, narrow waistband, center back zipper and kick pleat at center back.



TOP VIEW A Back

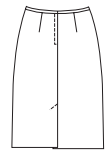


TOP VIEW B Back

SKIRT VIEW A Back



SKIRT VIEW B Back



**KWIK-SEW®**  
**3383** price

**MISSES' TOPS & SKIRTS**  
 Sizes: XS-S-M-L-XL  
**TOPS DESIGNED FOR LIGHTWEIGHT WOVEN FABRICS**  
 Suggested Fabrics: Challis, georgette, silk, silk-like fabrics, crepe, rayon & blends  
**SKIRTS DESIGNED FOR MEDIUM WEIGHT WOVEN FABRICS**  
 Suggested Fabrics: Linen, gabardine, crepe, silk types, rayon suitings

Size	XS	S	M	L	XL	
<b>Finished Length at Center Back from Natural Neckline</b>						
Top View A	28 (71)	29 1/2 (75)	30 1/2 (77)	31 1/2 (80)	32 1/2 (83)	" (cm)
Top View B	21 1/4 (54)	22 (56)	22 3/4 (58)	23 1/4 (59)	23 3/4 (60)	" (cm)
Skirt View A	32 (81)	32 (81)	32 (81)	32 (81)	32 (81)	" (cm)
Skirt View B	26 (66)	26 (66)	26 (66)	26 (66)	26 (66)	" (cm)
<b>Material Required:</b> Fabric requirement allows for nap, one-way design or shading. Extra fabric may be needed to match design or for shrinkage.						
<b>Fabric 60" (152 cm) Wide</b>						
Top View A	1 5/8 (1.50)	1 3/4 (1.60)	1 3/4 (1.60)	1 3/4 (1.60)	1 7/8 (1.75)	yd (m)
Top View B	2 1/4 (2.10)	2 3/8 (2.20)	2 3/8 (2.20)	2 1/2 (2.30)	2 5/8 (2.40)	yd (m)
Skirt View A	1 1/8 (1.05)	1 1/8 (1.05)	1 1/8 (1.05)	1 1/8 (1.05)	2 1/8 (1.95)	yd (m)
Skirt View B	1 (0.95)	1 (0.95)	1 (0.95)	1 (0.95)	2 3/4 (2.55)	yd (m)
<b>Fabric 45" (115 cm) Wide</b>						
Top View A	1 7/8 (1.75)	1 7/8 (1.75)	1 7/8 (1.75)	2 3/4 (2.55)	2 7/8 (2.65)	yd (m)
Top View B	2 1/4 (2.10)	2 3/8 (2.20)	2 3/8 (2.20)	2 1/2 (2.30)	2 5/8 (2.40)	yd (m)
Skirt View A	2 1/8 (1.95)	2 1/8 (1.95)	2 1/8 (1.95)	2 1/8 (1.95)	2 1/8 (1.95)	yd (m)
Skirt View B	1 3/4 (1.60)	1 3/4 (1.60)	1 3/4 (1.60)	1 3/4 (1.60)	1 3/4 (1.60)	yd (m)
<b>Fusible Interfacing 24" (60 cm) Wide</b>						
Top View A & B	3/8 (0.35)	3/8 (0.35)	3/8 (0.35)	3/8 (0.35)	3/8 (0.35)	yd (m)
Skirt View A & B	7/8 (0.80)	7/8 (0.80)	1 (0.95)	1 1/8 (1.05)	1 1/8 (1.05)	yd (m)

**Notions:** Thread. TOP View A: 5/8 yd (0.60 m) of 1/4" (6 mm) wide elastic. TOP View B: Two 1/2" (12 mm) buttons. SKIRT View A & B: One 7" (18 cm) zipper, one hook & eye set.