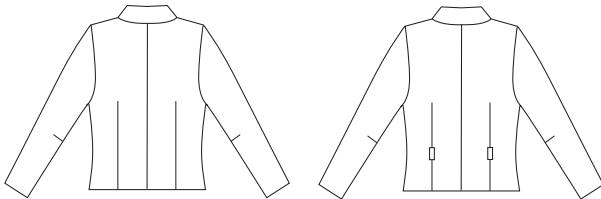


Misses'unlined fitted jackets have front and back darts, collar, lapels, and full-length sleeves. View A has decorative flaps on front, and button closure. View B has snap closure and belt loops for purchased belt.

VIEW A Back

VIEW B Back



**KWIK•SEW®**

**3386** price

**MISSES' JACKETS** DESIGNED FOR WOVEN FABRICS  
 Sizes: XS-S-M-L-XL Suggested Fabrics: Tweed, linen, twill, silk and rayon suitings, crepe, brocade, jacquard

| Size   | XS           | S            | M            | L            | XL           |        |
|--|--------------|--------------|--------------|--------------|--------------|--------|
| <b>Finished Length at Center Back</b>  |              |              |              |              |              |        |
| View A & B   | 20 (50)      | 20 3/4 (52)  | 21 1/2 (54)  | 22 1/4 (56)  | 23 (58)      | " (cm) |
| <b>Material Required:</b> Fabric requirement allows for nap, one-way design or shading. Extra fabric may be needed to match design or for shrinkage. |              |              |              |              |              |        |
| <b>Fabric 60" (152 cm) Wide</b>  |              |              |              |              |              |        |
| View A & B   | 1 5/8 (1.50) | 1 5/8 (1.50) | 1 3/4 (1.60) | 1 3/4 (1.60) | 1 3/4 (1.60) | yd (m) |
| <b>Fabric 45" (115 cm) Wide</b>  |              |              |              |              |              |        |
| View A & B   | 2 1/8 (1.95) | 2 1/8 (1.95) | 2 1/4 (2.10) | 2 1/4 (2.10) | 2 3/8 (2.20) | yd (m) |
| <b>Fusible Interfacing 24" (60 cm) Wide</b>  |              |              |              |              |              |        |
| View A & B   | 7/8 (0.80)   | 7/8 (0.80)   | 1 (0.95)     | 1 (0.95)     | 1 (0.95)     | yd (m) |
| <b>Notions:</b> Thread. VIEW A: Two 3/4" (20 mm) buttons, two 1/2" (12 mm) buttons. VIEW B: Two sew-on snaps, purchased belt.                        |              |              |              |              |              |        |