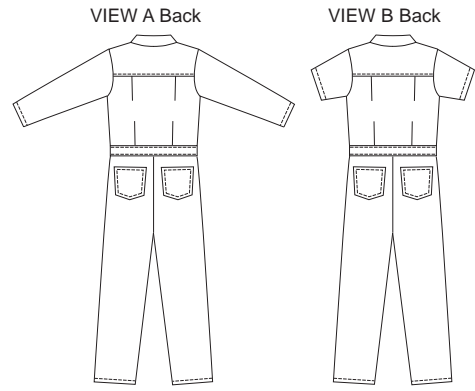




Men's coveralls are sized to be worn over clothes. They have extended shoulders, hidden front zipper and snap at top, inset waistband, tucks on back, yoke, collar, side pockets, breast and back patch pockets, and side slits to access inside pockets. View A has full-length sleeves, and View B has short sleeves.



**KWIK•SEW®**  
**3389** price

**MEN'S COVERALLS**  
 Sizes: S-M-L-XL-XXL

DESIGNED FOR MEDIUM TO HEAVYWEIGHT WOVEN FABRICS  
 Suggested Fabrics: Denim, twill, poplin, chino

Size	S	M	L	XL	XXL	
<b>Finished Inside Leg Seam</b>						
View A & B	29" (74 cm) – All Sizes					
<b>Material Required:</b> Fabric requirement allows for nap, one-way design or shading. Extra fabric may be needed to match design or for shrinkage.						
<b>Fabric 60" (152 cm) Wide</b>						
View A	3 7/8 (3.55)	4 (3.70)	4 1/8 (3.80)	4 3/8 (4.00)	4 5/8 (4.25)	yd (m)
View B	3 3/8 (3.10)	3 1/2 (3.20)	3 3/4 (3.45)	4 (3.70)	4 1/4 (3.90)	yd (m)
<b>Fabric 45" (115 cm) Wide</b>						
View A	5 1/8 (4.70)	5 1/4 (4.80)	5 3/8 (4.95)	5 1/2 (5.05)	6 (5.50)	yd (m)
View B	4 5/8 (4.25)	4 3/4 (4.35)	4 7/8 (4.50)	5 (4.60)	5 1/4 (4.80)	yd (m)
<b>Pocket Lining 32" (80 cm) Wide (minimum width)</b>						
View A or B	1/2 (0.50)	1/2 (0.50)	1/2 (0.50)	1/2 (0.50)	1/2 (0.50)	yd (m)
<b>Fusible Interfacing 24" (60 cm) Wide</b>						
View A or B	1/4 (0.25)	1/4 (0.25)	1/4 (0.25)	1/4 (0.25)	1/4 (0.25)	yd (m)
<b>Notions:</b> Thread, one snap, one zipper – 18" (45 cm) for sizes S-M-L; 20" (50 cm) for sizes XL-XXL.						