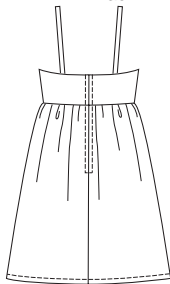
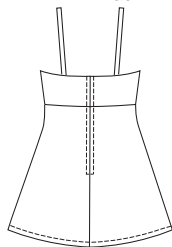


VIEW A Back



VIEW B Back



Misses' dress and tunic have empire waist, cups gathered to bodice, shoulder straps, and center back zipper. View A dress has front and back gathered to bodice. View B tunic has bias-cut front and back.



DRESSES

KWIK•SEW®
price **3395**

DESIGNED FOR SOFT LIGHTWEIGHT WOVEN FABRICS

Suggested Fabrics: Silk, silk-like fabrics, challis, charmeuse, georgette, rayon, rayon blends, lawn, gauze

MISSSES' DRESS & TUNIC
Sizes: XS-S-M-L-XL

Size	XS	S	M	L	XL	
Finished Length at Center Back from Natural Waist						
View A	20" (50 cm) All Sizes					
View B	12" (30 cm) All Sizes — Finished length may vary due to bias cut.					
Material Required: Fabric requirement allows for nap, one-way design or shading. Extra fabric may be needed to match design or for shrinkage.						
Fabric 60" (152 cm) Wide						
View A	1 1/2 (1.40)	1 1/2 (1.40)	1 5/8 (1.50)	1 7/8 (1.75)	2 1/8 (1.95)	yd (m)
View B	1 3/8 (1.30)	1 3/8 (1.30)	1 1/2 (1.40)	1 5/8 (1.50)	1 3/4 (1.60)	yd (m)
Fabric 45" (115 cm) Wide						
View A	2 (1.85)	2 1/8 (1.95)	2 1/8 (1.95)	2 1/4 (2.10)	2 3/8 (2.20)	yd (m)
View B	1 3/8 (1.30)	1 1/2 (1.40)	1 5/8 (1.50)	1 7/8 (1.75)	2 (1.85)	yd (m)
Notions: Thread, one 9" (23 cm) zipper, one hook & eye set, 1/8 yd (0.15 m) of non-fusible interfacing.						