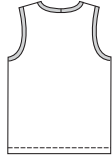
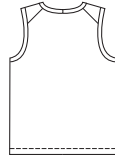
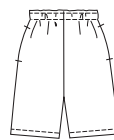


SHIRT
VIEW A BackSHIRT
VIEW B Back

Boys' shorts, shirts and hat. Pull-on shorts have elastic waist, fake fly, and side seam pockets. View A are below knee length, and View B are slightly above knee. Pullover shirts are sleeveless with fabric bands. View A has V-neckline, and neckband and armhole bands are made from contrast fabric. View B has round neckline, and shoulder insets. Hat has brim and six-panel crown.

SHORTS
VIEW A BackSHORTS
VIEW B Back

HAT



A



B



BOYS'

KWIK•SEW®
price **3398**

SHORTS & HAT DESIGNED FOR MEDIUM WEIGHT WOVEN FABRICS

Suggested Fabrics: Twill, chino, denim, cotton, cotton types

SHIRTS DESIGNED FOR STRETCH KNITS ONLY WITH 25% STRETCH

Suggested Fabrics: Interlock, single knit, textured knits

BOYS' SHORTS, SHIRTS & HAT

Sizes: XS(4-5)–S(6)–M(7-8)–
L(10)–XL(12-14)

Size	XS (4-5)	S (6)	M (7-8)	L (10)	XL (12-14)	
Height	42 (107)	46 (117)	50 (127)	55 (140)	60 (152)	" (cm)
Chest	23 1/2 (60)	25 (64)	26 1/2 (67)	28 1/2 (72)	31 (79)	" (cm)
Hip	24 (61)	25 1/2 (65)	27 1/2 (70)	30 (76)	32 (81)	" (cm)
Head Circumference	—	19 1/2 (49)	21 (53)	22 1/2 (57)	—	" (cm)
Finished Length of Shirt at Center Back						
View A & B	17 (43)	18 1/2 (47)	20 (51)	21 1/4 (54)	23 1/4 (59)	" (cm)
Finished Inside Leg Seam						
View A	10 1/2 (27)	12 (31)	13 3/4 (35)	15 1/2 (39)	17 1/2 (45)	" (cm)
View B	4 3/4 (12)	5 3/4 (15)	6 3/4 (17)	8 (20)	9 1/2 (24)	" (cm)
Material Required: Fabric requirement allows for nap, one-way design or shading. Extra fabric may be needed to match design or for shrinkage.						
Fabric 60" (152 cm) Wide						
Shorts View A	3/4 (0.70)	3/4 (0.70)	7/8 (0.80)	7/8 (0.80)	1 (0.95)	yd (m)
View B	5/8 (0.60)	5/8 (0.60)	3/4 (0.70)	3/4 (0.70)	7/8 (0.80)	yd (m)
Shirt View A	5/8 (0.60)	5/8 (0.60)	3/4 (0.70)	3/4 (0.70)	3/4 (0.70)	yd (m)
View A Contrast	1/8 (0.15)	1/8 (0.15)	1/8 (0.15)	1/8 (0.15)	1/8 (0.15)	yd (m)
View B	3/4 (0.70)	3/4 (0.70)	7/8 (0.80)	7/8 (0.80)	7/8 (0.80)	yd (m)
Hat	—	1/4 (0.25)	1/4 (0.25)	1/4 (0.25)	—	yd (m)
Fabric 45" (115 cm) Wide						
Shorts View A	7/8 (0.80)	1 (0.95)	1 1/4 (1.15)	1 3/8 (1.30)	1 1/2 (1.40)	yd (m)
View B	3/4 (0.70)	7/8 (0.80)	7/8 (0.80)	1 (0.95)	1 1/8 (1.05)	yd (m)
Hat	—	3/8 (0.35)	3/8 (0.35)	3/8 (0.35)	—	yd (m)
Heavy Fusible Interfacing 24" (60 cm) Wide						
Hat	—	1/4 (0.25)	1/4 (0.25)	1/4 (0.25)	—	yd (m)

Notions: Thread. **SHORTS View A & B:** 5/8 yd (0.60 m) of 1 1/4" (3 cm) wide elastic for sizes XS-S, 3/4 yd (0.70 m) of 1 1/2" (4 cm) wide elastic for sizes M-L-XL, scrap piece of fusible interfacing. **HAT:** 5/8 yd (0.60 m) of 1" (2.5 cm) wide elastic.