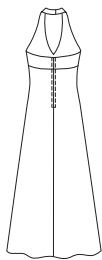
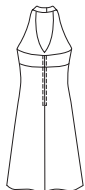


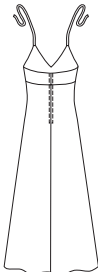
VIEW A Back



VIEW B Back



VIEW C Back



Misses' fitted dresses have empire waist, slightly flared skirts, and zipper at center back. Bodice is lined with gathers under bust, and empire seams have optional trim. View A and B have halter-style bodice with snap closure at back neck, and optional trim on neckline. View C has narrow straps that tie at back neck, or decorative trim or chain for neck strap.

A



C



B



KWIK·SEW®

price **3402**

DESIGNED FOR WOVEN FABRICS

Suggested Fabrics: Satin, taffeta, shantung, brocade, velvet, cotton types, linen

MISSES' DRESSES

Sizes: XS-S-M-L-XL

Size	XS	S	M	L	XL	
Finished Length at Center Back from Natural Waist						
View A & C	43" (109 cm) – All Sizes					
View B	24" (61 cm) – All Sizes					
Finished Width at Bottom Edge						
View A & C	64 (164)	68 (172)	71 (180)	74 (188)	78 (198)	" (cm)
View B	50 (126)	53 (134)	56 (142)	59 (150)	63 (160)	" (cm)
Material Required: Fabric requirement allows for nap, one-way design or shading. Extra fabric may be needed to match design or for shrinkage.						
Fabric 60" (152 cm) Wide						
View A	2 3/8 (2.20)	2 5/8 (2.40)	3 (2.75)	3 1/8 (2.85)	3 1/8 (2.85)	yd (m)
View B	1 1/2 (1.40)	1 1/2 (1.40)	1 5/8 (1.50)	1 5/8 (1.50)	1 3/4 (1.60)	yd (m)
View C	2 3/8 (2.20)	2 5/8 (2.40)	2 7/8 (2.65)	2 7/8 (2.65)	3 (2.75)	yd (m)
Fabric 45" (115 cm) Wide						
View A	3 3/8 (3.10)	3 3/8 (3.10)	3 1/2 (3.20)	3 1/2 (3.20)	3 1/2 (3.20)	yd (m)
View B	2 (1.85)	2 (1.85)	2 (1.85)	2 1/4 (2.10)	2 3/8 (2.20)	yd (m)
View C	3 1/8 (2.85)	3 1/4 (3.00)	3 1/4 (3.00)	3 3/8 (3.10)	3 3/8 (3.10)	yd (m)
Lining 45" (115 cm) or 60" (152 cm) Wide						
View A & B	5/8 (0.60)	5/8 (0.60)	5/8 (0.60)	3/4 (0.70)	3/4 (0.70)	yd (m)
View C	3/8 (0.35)	3/8 (0.35)	3/8 (0.35)	1/2 (0.50)	1/2 (0.50)	yd (m)
Non-Fusible Interfacing 24" (60 cm) Wide						
View A, B & C	5/8 (0.60)	5/8 (0.60)	3/4 (0.70)	3/4 (0.70)	3/4 (0.70)	yd (m)

Notions: Thread, one 12" (30 cm) zipper, hook & eye, optional empire waist trim — XS - 31" (78 cm); S - 34" (86 cm); M - 37" (94 cm); L - 40" (101 cm); XL - 44" (112 cm), and additional for bow. **VIEW A & B:** Two sew-on snaps, optional neckline trim — XS & S - 35" (89 cm); M - 36" (91 cm); L - 38" (96 cm); XL - 39" (99 cm). **VIEW C:** Optional trim for straps — XS & S - 22" (55 cm), M - 23" (58 cm), L - 24" (60 cm), XL - 25" (63 cm).