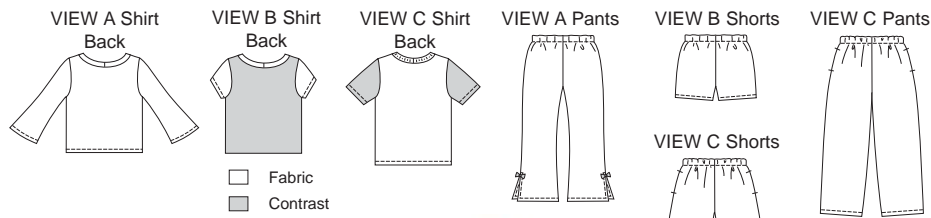
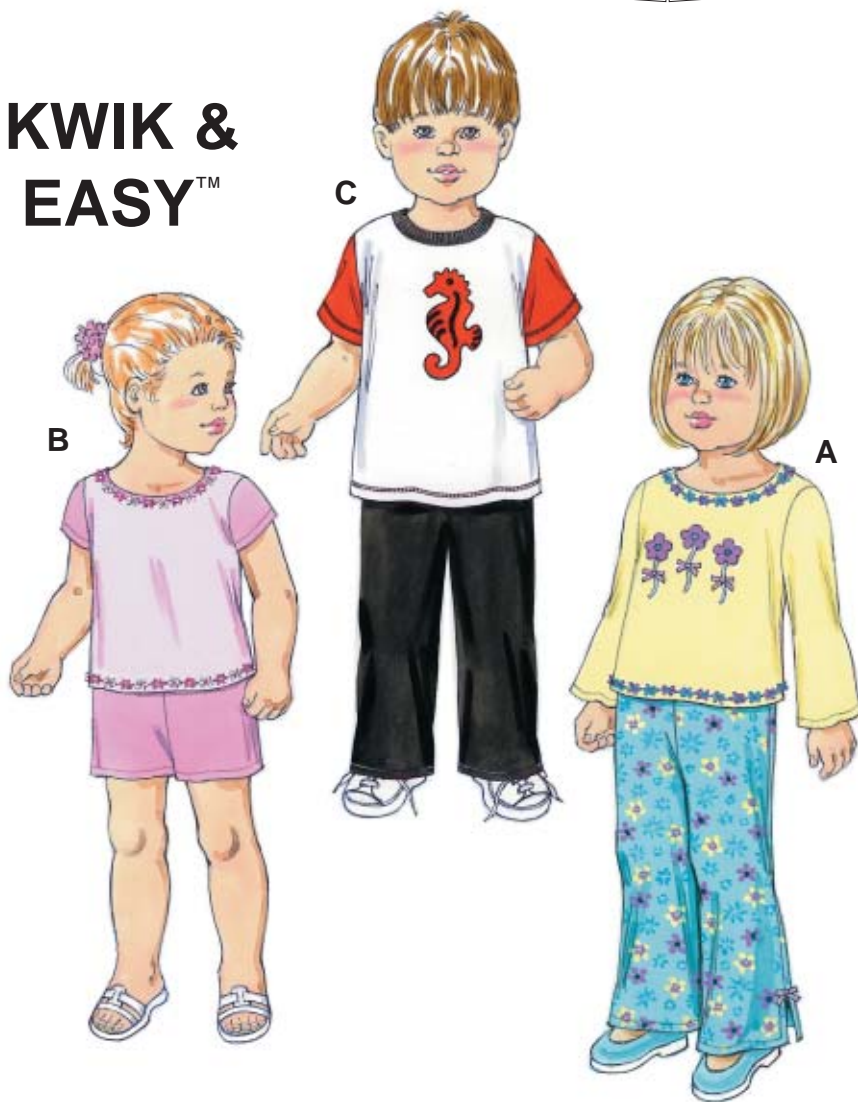




Toddlers' shirts, pants and shorts. View A and B shirts have a wide neckline with neckband, and optional trim on front at neckline and bottom edge. View A shirt has full-length flared sleeves. View B shirt has short sleeves, and front and back are from contrast fabric. View C shirt has crew neckline with ribbing neckband, and short sleeves from contrast fabric. View A and B pull-on pants and shorts are close-fitting and have elastic in casing at waist. View A pants are slightly flared and have hemline slits with bows. View C pull-on pants and shorts are loose-fitting and have side seam pockets. Two optional appliqué designs are included.



KWIK & EASY™



KWIK•SEW®
3424 price

TODDLERS' SHIRTS, PANTS & SHORTS SHIRTS AND VIEW A & B PANTS DESIGNED FOR STRETCH KNITS ONLY WITH 25% STRETCH
 Suggested Fabrics: Interlock, textured knits, jersey, stretch velour
 SIZES: T1-T2-T3-T4 VIEW C PANTS DESIGNED FOR FIRM STRETCH KNITS
 Suggested fabrics: Sweatshirt fleece, French terry, double knit

Size	T1	T2	T3	T4	
Finished Length of Shirt at Center Back					
View A & B	10 1/4 (26)	11 (28)	11 3/4 (30)	12 1/2 (32)	" (cm)
View C	11 1/2 (29)	12 1/2 (32)	13 1/2 (34)	14 1/2 (37)	" (cm)
Finished Inside Leg Seam					
View A & C Pants	10 (25)	11 1/2 (29)	13 (33)	14 1/2 (37)	" (cm)
View B Shorts	1 3/4 (4.5)	2 (5)	2 1/4 (5.5)	2 1/2 (6)	" (cm)
View C Shorts	2 1/2 (6)	2 3/4 (7)	3 (7.5)	3 1/4 (8)	" (cm)
Material Required: Fabric requirement allows for nap, one-way design or shading. Extra fabric may be needed to match design or for shrinkage.					
Fabric 60" (152 cm) Wide					
View A Shirt	1/2 (0.50)	1/2 (0.50)	1/2 (0.50)	5/8 (0.60)	yd (m)
Pants	5/8 (0.60)	3/4 (0.70)	3/4 (0.70)	3/4 (0.70)	yd (m)
View B Shirt & Shorts Fabric	3/8 (0.35)	1/2 (0.50)	1/2 (0.50)	1/2 (0.50)	yd (m)
Contrast	1/2 (0.50)	1/2 (0.50)	1/2 (0.50)	1/2 (0.50)	yd (m)
View C Shirt Fabric	1/2 (0.50)	1/2 (0.50)	1/2 (0.50)	1/2 (0.50)	yd (m)
Contrast	1/4 (0.25)	1/4 (0.25)	1/4 (0.25)	1/4 (0.25)	yd (m)
Pants	5/8 (0.60)	3/4 (0.70)	3/4 (0.70)	3/4 (0.70)	yd (m)
Shorts	1/2 (0.50)	1/2 (0.50)	1/2 (0.50)	1/2 (0.50)	yd (m)
Ribbing 28" (70 cm) Wide					
View C Shirt	3 (7)	3 (7)	3 (7)	3 (7)	" (cm)

Notions: Thread, scrap piece of fusible interfacing. PANTS & SHORTS: 5/8 yd (0.60 m) of 3/4" (2 cm) wide elastic. SHIRT VIEW A & B: 3/4 yd (0.70 m) of decorative trim (optional). OPTIONAL APPLIQUÉ: Scrap pieces of fabric, paper-backed fusible web, tear-away material, for flower appliqué – ribbon for bows.