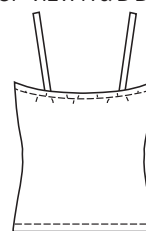
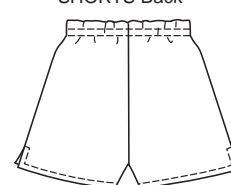


Misses' sleepwear. Pull-on shorts have elastic in casing at waist, side hemline slits, and fake fly. Tank tops are very close fitting and have spaghetti straps. View A has V-neckline and front armholes finished with lace, and elastic on back at top edge. View B has top edge finished with elastic.

TOP VIEW A & B Back



SHORTS Back



KWIK•SEW®
price **3425**

SHORTS DESIGNED FOR LIGHTWEIGHT WOVEN FABRICS

Suggested Fabrics: Cotton, cotton types, broadcloth, silk, silk-like fabrics

TOPS DESIGNED FOR STRETCH KNITS ONLY WITH 25% STRETCH

Suggested Fabrics: Interlock, textured knits, pointelle jersey

MISSSES' SLEEPWEAR

Sizes: XS-S-M-L-XL

Size	XS	S	M	L	XL	
Finished Inside Leg Seam of Shorts	1 1/2" (4 cm) - All Sizes					
Finished Length at Center Back from Natural Neckline						
Top View A & B	20 (50)	20 3/4 (52)	21 1/2 (54)	22 (56)	22 1/2 (57)	" (cm)
Material Required: Fabric requirement allows for nap, one-way design or shading. Extra fabric may be needed to match design or for shrinkage.						
Fabric 60" (152 cm) Wide						
Shorts	1/2 (0.50)	1/2 (0.50)	5/8 (0.60)	3/4 (0.70)	7/8 (0.80)	yd (m)
Top View A or B	1/2 (0.50)	1/2 (0.50)	1/2 (0.50)	5/8 (0.60)	5/8 (0.60)	yd (m)
Fabric 45" (115 cm) Wide						
Shorts	7/8 (0.80)	1 (0.95)	1 (0.95)	1 (0.95)	1 1/8 (1.05)	yd (m)
Notions: Thread. SHORTS: 1 yd (0.95 m) of 1" (2.5 cm) wide elastic. TOP VIEW A: 5/8 yd (0.60 m) of 3/8" (1 cm) wide elastic, 1 yd (0.95 m) of 3/8" - 1" (1 cm - 2.5 cm) wide edging lace. TOP VIEW B: 1 1/4 yd (1.20 m) of 3/8" (1 cm) wide elastic.						