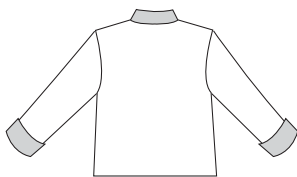


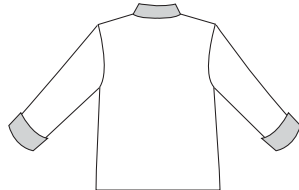


Misses' straight-cut jackets are reversible and have collar, lapels, and full-length sleeves with fold-up cuffs. View B has welt pockets on one side.

VIEW A Back



VIEW B Back



KWIK & EASY™

it's reversible!

KWIK•SEW®
3428 price

MISSES' JACKETS DESIGNED FOR LIGHT TO MEDIUM WEIGHT WOVEN FABRICS
 Sizes: XS-S-M-L-XL Suggested Fabrics: Cotton, cotton types, linen, linen types, silk, silk types, rayon and blends

Size	XS	S	M	L	XL	
Finished Length at Center Back						
View A	22 3/4 (58)	23 1/2 (60)	24 1/2 (62)	25 (64)	26 (66)	" (cm)
View B	25 1/2 (65)	26 1/2 (67)	27 1/2 (70)	28 1/2 (73)	29 1/2 (75)	" (cm)
Material Required: Fabric requirement allows for nap, one-way design or shading. Extra fabric may be needed to match design or for shrinkage.						
Fabric & Contrast Fabric 60" (152 cm) Wide						
View A Each	1 1/2 (1.40)	1 5/8 (1.50)	1 5/8 (1.50)	1 5/8 (1.50)	1 5/8 (1.50)	yd (m)
View B Each	1 3/4 (1.60)	1 3/4 (1.60)	1 3/4 (1.60)	1 7/8 (1.75)	1 7/8 (1.75)	yd (m)
Fabric & Contrast Fabric 45" (115 cm) Wide						
View A Each	2 1/4 (2.10)	2 1/4 (2.10)	2 3/8 (2.20)	2 3/8 (2.20)	2 1/2 (2.30)	yd (m)
View B Each	2 3/8 (2.20)	2 1/2 (2.30)	2 1/2 (2.30)	2 5/8 (2.40)	2 5/8 (2.40)	yd (m)
Fusible Interfacing 24" (60 cm) Wide						
View A	7/8 (0.80)	7/8 (0.80)	7/8 (0.80)	7/8 (0.80)	7/8 (0.80)	yd (m)
View B	7/8 (0.80)	7/8 (0.80)	1 (0.95)	1 (0.95)	1 (0.95)	yd (m)

Notions: Thread.