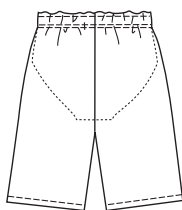


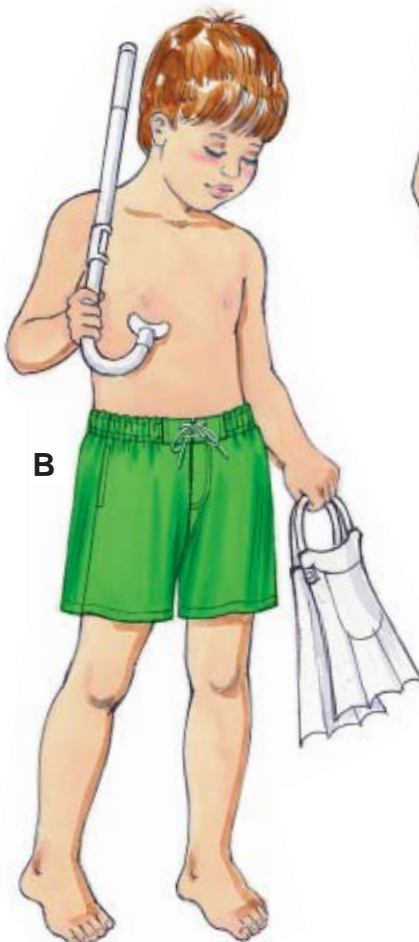
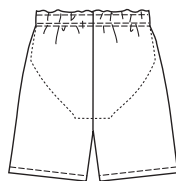


Boys' shorts have forward side seams with pockets, fake fly, decorative front tabs with eyelets and drawstring, stitched elastic waist, and fitted lining with elastic at leg openings.

VIEW A Back



VIEW B Back



KWIK•SEW®

3430 price

BOYS' SHORTS

Sizes: XS(4-5)-S(6)-M(7-8)-
L(10)-XL(12-14)

DESIGNED FOR LIGHTWEIGHT WOVEN FABRICS

Suggested Fabrics: Supplex, nylon and blends, cotton, cotton blends

LINING: Athletic mesh

Standard Body Measurements:

Size	XS (4-5)	S (6)	M (7-8)	L (10)	XL (12-14)	
Height	42 (107)	46 (117)	50 (127)	55 (140)	60 (152)	" (cm)
Waist	22 (56)	23 (58)	24 (61)	25 (64)	27 (68)	" (cm)
Hip	24 (61)	25 1/2 (65)	27 1/2 (70)	30 (76)	32 (81)	" (cm)

Finished Inside Leg Seam

View A	4 1/2 (11)	5 (14)	6 3/4 (17)	8 (20)	9 1/2 (24)	" (cm)
View B	2 1/2 (6)	3 (8)	3 3/4 (10)	4 1/2 (12)	5 1/2 (14)	" (cm)

Material Required: Fabric requirement allows for nap, one-way design or shading. Extra fabric may be needed to match design or for shrinkage.

Fabric 60" (152 cm) Wide

View A	5/8 (0.60)	5/8 (0.60)	3/4 (0.70)	3/4 (0.70)	7/8 (0.80)	yd (m)
View B	1/2 (0.50)	5/8 (0.60)	5/8 (0.60)	3/4 (0.70)	3/4 (0.70)	yd (m)

Fabric 45" (115 cm) Wide

View A	3/4 (0.70)	7/8 (0.80)	7/8 (0.80)	1 (0.95)	1 1/8 (1.05)	yd (m)
View B	3/4 (0.70)	3/4 (0.70)	7/8 (0.80)	7/8 (0.80)	1 (0.95)	yd (m)

Lining 45" (115 cm) or 60" (152 cm) Wide

View A & B	3/8 (0.35)	3/8 (0.35)	3/8 (0.35)	3/8 (0.35)	3/8 (0.35)	yd (m)
------------	------------	------------	------------	------------	------------	--------

Notions: Thread, elastic for waist: sizes XS & S – 5/8 yd (0.60 m) of 1 1/4" (3 cm) wide; sizes M, L & XL – 3/4 yd (0.70 m) of 1 1/2" (4 cm) wide, scrap piece of interfacing, four eyelets, drawstring, 1 yd (0.95 m) of 3/8" (1 cm) wide swimwear elastic.