

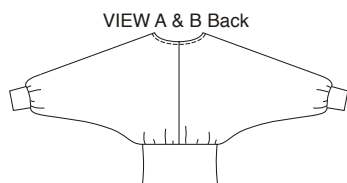


B



A

Misses' tops with dolman sleeves have cuffs, wide waistband and deep V-neckline finished with facing. View A has front button closure on waistband. View B is pullover style.



# KWIK & EASY™

**KWIK·SEW®**  
**3435** price

**MISSES' TOPS** DESIGNED FOR STRETCH KNITS ONLY WITH 35% STRETCH  
 Sizes: XS-S-M-L-XL Suggested Fabrics: Interlock, textured knits, fabrics with spandex Lycra®, jersey, stretch velvet

Size	XS	S	M	L	XL	
<b>Finished Length at Center Back</b>						" (cm)
View A & B	19 (49)	19 1/2 (50)	20 1/4 (51)	21 (53)	21 3/4 (55)	
<b>Material Required:</b> Fabric requirement allows for nap, one-way design or shading. Extra fabric may be needed to match design or for shrinkage.						
<b>Fabric 60" (152 cm) Wide</b>						
View A	1 1/2 (1.40)	1 5/8 (1.50)	2 (1.85)	2 1/8 (1.95)	2 1/8 (1.95)	yd (m)
View B	1 5/8 (1.50)	1 5/8 (1.50)	2 (1.85)	2 1/8 (1.95)	2 1/8 (1.95)	yd (m)
<b>Fusible Interfacing 24" (60 cm) Wide</b>						
View A & B	5/8 (0.60)	5/8 (0.60)	5/8 (0.60)	5/8 (0.60)	3/4 (0.70)	yd (m)

**Notions:** Thread. VIEW A: Scrap piece of non-fusible interfacing, three 5/8" (15 mm) buttons.