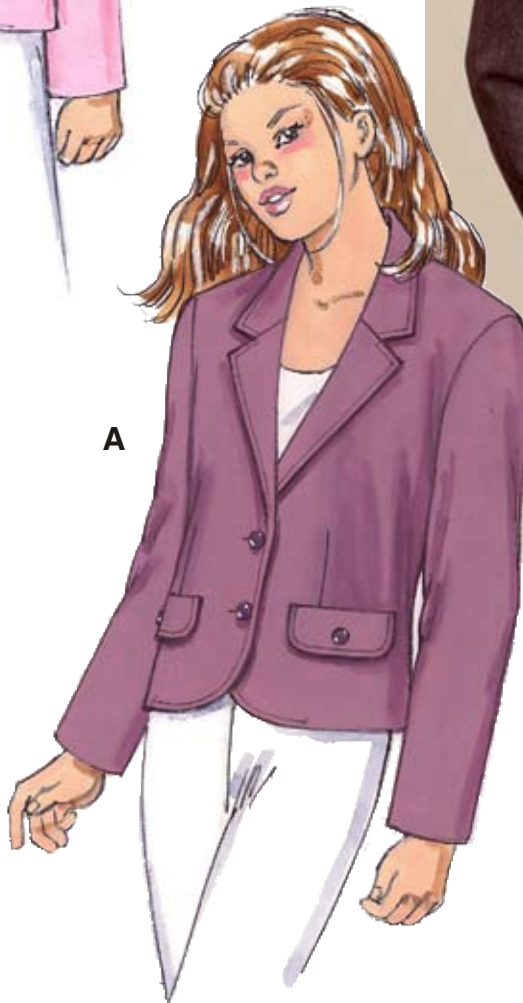




B

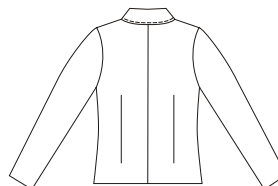


A

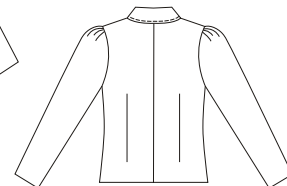


Girls' unlined fitted jackets have front and back darts, front button closure, collar and lapels with topstitching detail, and decorative pocket flaps with buttons. View A has set-in sleeves, and View B sleeves are gathered at cap.

VIEW A Back



VIEW B Back



**KWIK·SEW®**  
price **3440**

**DESIGNED FOR MEDIUM WEIGHT WOVEN FABRIC**

Suggested Fabrics: Twill, crepe, gabardine, silk and rayon suitings, linen types, denim

**GIRLS' JACKETS**  
Sizes: XS(4-5)–S(6)–M(7-8)–L(10)–XL(12-14)

**Standard Body Measurements:**

Size	XS (4-5)	S (6)	M (7-8)	L (10)	XL (12-14)	
Height	42 (107)	46 (117)	50 (127)	55 (140)	60 (152)	" (cm)
Chest	23 1/2 (60)	25 (64)	26 1/2 (67)	28 1/2 (72)	31 (79)	" (cm)
Waist	22 (56)	23 (58)	24 (61)	25 (64)	27 (68)	" (cm)
Hip	24 (61)	25 1/2 (65)	27 1/2 (70)	30 (76)	32 (81)	" (cm)

**Finished Length at Center Back**

View A & B	14 1/2 (36)	15 1/2 (39)	16 3/4 (42)	18 (46)	19 1/2 (49)	" (cm)
------------	-------------	-------------	-------------	---------	-------------	--------

**Material Required:** Fabric requirement allows for nap, one-way design or shading. Extra fabric may be needed to match design or for shrinkage.

**Fabric 60" (152 cm) Wide**

View A or B	1 (0.95)	1 1/8 (1.05)	1 1/8 (1.05)	1 1/4 (1.15)	1 3/8 (1.30)	yd (m)
-------------	----------	--------------	--------------	--------------	--------------	--------

**Fabric 45" (115 cm) Wide**

View A or B	1 1/4 (1.15)	1 3/8 (1.30)	1 3/8 (1.30)	1 1/2 (1.40)	1 5/8 (1.50)	yd (m)
-------------	--------------	--------------	--------------	--------------	--------------	--------

**Fusible Interfacing 24" (60 cm) Wide**

View A or B	1/2 (0.50)	5/8 (0.60)	5/8 (0.60)	5/8 (0.60)	3/4 (0.70)	yd (m)
-------------	------------	------------	------------	------------	------------	--------

**Notions:** Thread, four 5/8" (15 mm) buttons.