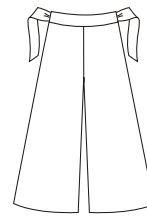




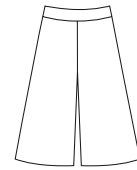
Top # 3190

Girls' pull-on pants in three lengths have yoke with elastic at waist and very full legs. View A has ties attached in side seams, and is ankle-length. View B is below knee length. View C is above knee length.

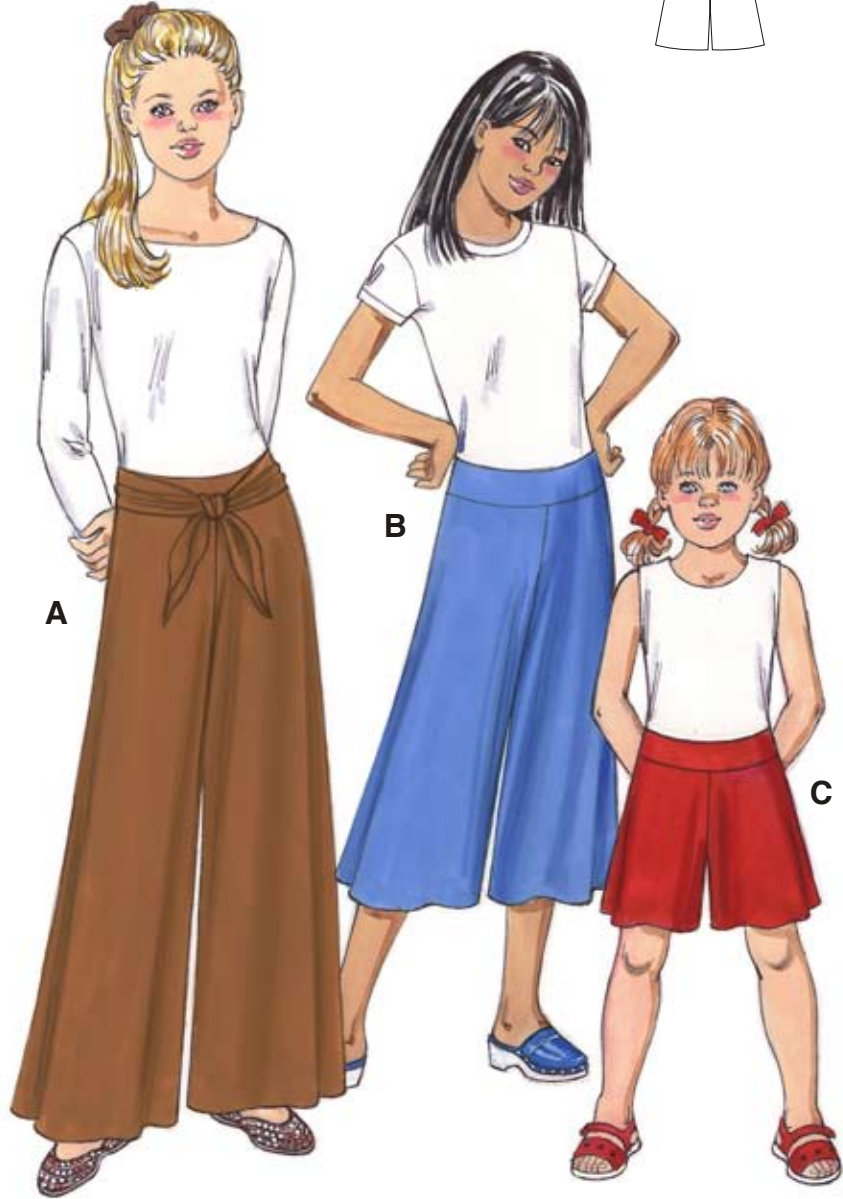
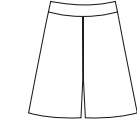
VIEW A Back



VIEW B Back



VIEW C Back



KWIK·SEW®
3441 price

KWIK & EASY™

GIRLS' PANTS

Sizes: XS(4-5)–S(6)–M(7-8)–L(10)–XL(12-14)

DESIGNED FOR STRETCH KNITS ONLY WITH 25% STRETCH

Suggested Fabrics: Interlock, jersey, matte jersey, double knit

Standard Body Measurements:

Size	XS (4-5)	S (6)	M (7-8)	L (10)	XL (12-14)	
Height	42 (107)	46 (117)	50 (127)	55 (140)	60 (152)	" (cm)
Waist	22 (56)	23 (58)	24 (61)	25 (64)	27 (68)	" (cm)
Hip	24 (61)	25 1/2 (65)	27 1/2 (70)	30 (76)	32 (81)	" (cm)

Finished Inside Leg Seam

View A	16 (41)	18 (46)	20 (51)	22 1/2 (57)	25 1/2 (65)	" (cm)
View B	9 1/2 (24)	11 (27)	12 (31)	13 1/2 (35)	15 1/2 (39)	" (cm)
View C	5 (12)	5 1/2 (14)	6 1/2 (16)	7 (18)	8 (20)	" (cm)

Material Required: Fabric requirement allows for nap, one-way design or shading. Extra fabric may be needed to match design or for shrinkage.

Fabric 60" (152 cm) Wide

View A	7/8 (0.80)	1 (0.95)	1 1/8 (1.05)	1 5/8 (1.50)	1 3/4 (1.60)	yd (m)
View B	5/8 (0.60)	3/4 (0.70)	3/4 (0.70)	7/8 (0.80)	1 1/4 (1.15)	yd (m)
View C	5/8 (0.60)	5/8 (0.60)	5/8 (0.60)	5/8 (0.60)	3/4 (0.70)	yd (m)

Notions: Thread, 3/4 yd (0.70 m) of 3/4" (2 cm) wide elastic.