



**B**

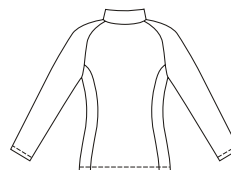


**A**

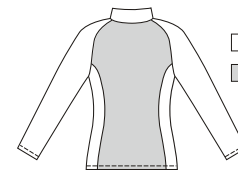


Misses' close-fitting jackets have side panels, stand-up collar and raglan sleeves. View A has front zipper opening and front pockets. View B pullover has zipper in collar, and front and back from contrast fabric.

VIEW A Back



VIEW B Back



□ Fabric  
■ Contrast

**KWIK·SEW®**  
price **3452**

DESIGNED FOR STRETCH KNITS ONLY WITH 50% STRETCH

Suggested Fabrics: Fleece with spandex Lycra®, activewear fabrics with spandex Lycra®, Polartec® PowerStretch®\*

**MISSSES' JACKETS**  
Sizes: XS-S-M-L-XL

\* Polartec® PowerStretch® trademark of Malden Mills.

Size	XS	S	M	L	XL	
<b>Finished Length at Center Back from Neckline</b>						
View A or B	24 (60)	24 (60)	24 (60)	26 (65)	26 (65)	" (cm)
<b>Material Required:</b> Fabric requirement allows for nap, one-way design or shading. Extra fabric may be needed to match design or for shrinkage.						
<b>Fabric 60" (152 cm) Wide</b>						
View A	1 1/4 (1.15)	1 3/8 (1.30)	1 5/8 (1.50)	1 3/4 (1.60)	1 3/4 (1.60)	yd (m)
View B Fabric	7/8 (0.80)	1 (0.95)	1 (0.95)	1 (0.95)	1 (0.95)	yd (m)
Contrast	7/8 (0.80)	7/8 (0.80)	7/8 (0.80)	7/8 (0.80)	7/8 (0.80)	yd (m)
<b>Notions:</b> Thread, scrap piece of fusible interfacing. <b>VIEW A:</b> One separating zipper – 24" (60 cm) for sizes XS-S-M, 26" (65 cm) for sizes L-XL. <b>VIEW B:</b> One 9" (22 cm) zipper.						