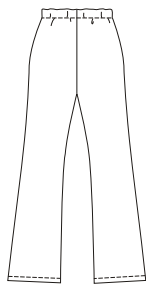
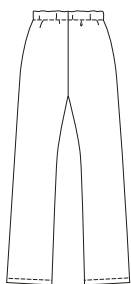


Back (Flared Leg)



Back (Straight Leg)



Misses' close-fitting pull-on pants have elastic waist, flared or straight legs. View B has front side insets, and pockets with zipper closure.



PANTS

KWIK & EASY™

KWIK·SEW®
price **3454**

DESIGNED FOR STRETCH KNITS ONLY WITH 50% STRETCH ACROSS THE GRAIN
Suggested Fabrics: Fleece with spandex Lycra®, activewear fabrics with spandex Lycra®,
Polartec® PowerStretch®*
VIEW B POCKET LINING IN LIGHTWEIGHT KNIT OR WOVEN FABRIC

MISSES' PANTS
Sizes: XS-S-M-L-XL

* Polartec® PowerStretch® trademark of Malden Mills.

Size	XS	S	M	L	XL	
Finished Inside Leg Seam						
View A & B	31" (79 cm) — All Sizes					
Material Required: Fabric requirement allows for nap, one-way design or shading. Extra fabric may be needed to match design or for shrinkage.						
Fabric 60" (152 cm) Wide						
View A or B	1 3/8 (1.30)	1 3/8 (1.30)	1 3/8 (1.30)	1 1/2 (1.40)	2 1/4 (2.10)	yd (m)
Lining 30" (75 cm) Wide (minimum width)						
View B Pockets	3/8 (0.35)	3/8 (0.35)	3/8 (0.35)	3/8 (0.35)	3/8 (0.35)	yd (m)
Notions: Thread, 1 yd (0.95 m) of 1" (2.5 cm) wide elastic. VIEW B: Two 6" (15 cm) zippers or longer, zippers can be trimmed.						