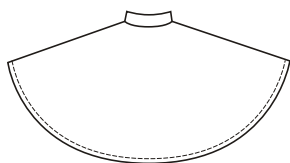


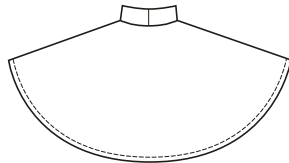
# KWIK Start® LEARN-TO-SEW

ESPECIALLY DESIGNED FOR FIRST SEWING PROJECT!

VIEW A Back



VIEW B Back



Misses' and Girls' ponchos have bottom edges finished with narrow hems. View A has open front and stand-up collar with Velcro® closure. View B pullover style has wide stand-up collar. Ponchos are very easy to make and have special easy-to-follow sewing instructions.



KWIK Start® LEARN-TO-SEW

JACKETS

**KWIK·SEW®**

**3458** price

**MISSES' & GIRLS' PONCHOS**

Sizes: S-M-L-XL

DESIGNED FOR HEAVYWEIGHT STRETCH KNITS ONLY

Suggested Fabrics: Polarfleece®, berber fleece, heavy fleece

**NOTE: Select size by comparing lengths of poncho to desired length.**

Size	S	M	L	XL	
<b>Finished Length at Center Back from Natural Neckline to Bottom Edge</b>					
View A & B	20 1/2 (52)	22 3/4 (58)	25 (64)	26 (66)	" (cm)

Size	S	M	L	XL	
<b>Finished Length from Natural Neckline Over Shoulder to Bottom Edge</b>					
View A & B	19 (48)	21 1/2 (54)	23 1/2 (60)	24 1/2 (62)	" (cm)

**Material Required:** Fabric requirement allows for nap, one-way design or shading. Extra fabric may be needed to match design or for shrinkage.

Fabric 60" (152 cm) Wide	View A	View B			
View A	1 1/4 (1.15)	1 3/8 (1.40)	1 5/8 (1.50)	1 3/4 (1.60)	yd (m)
View B	1 5/8 (1.50)	1 3/4 (1.60)	1 7/8 (1.75)	2 (1.85)	yd (m)

**Notions:** Thread. VIEW A: 1 1/2" (4 cm) of 1" (2.5 cm) wide Velcro®.