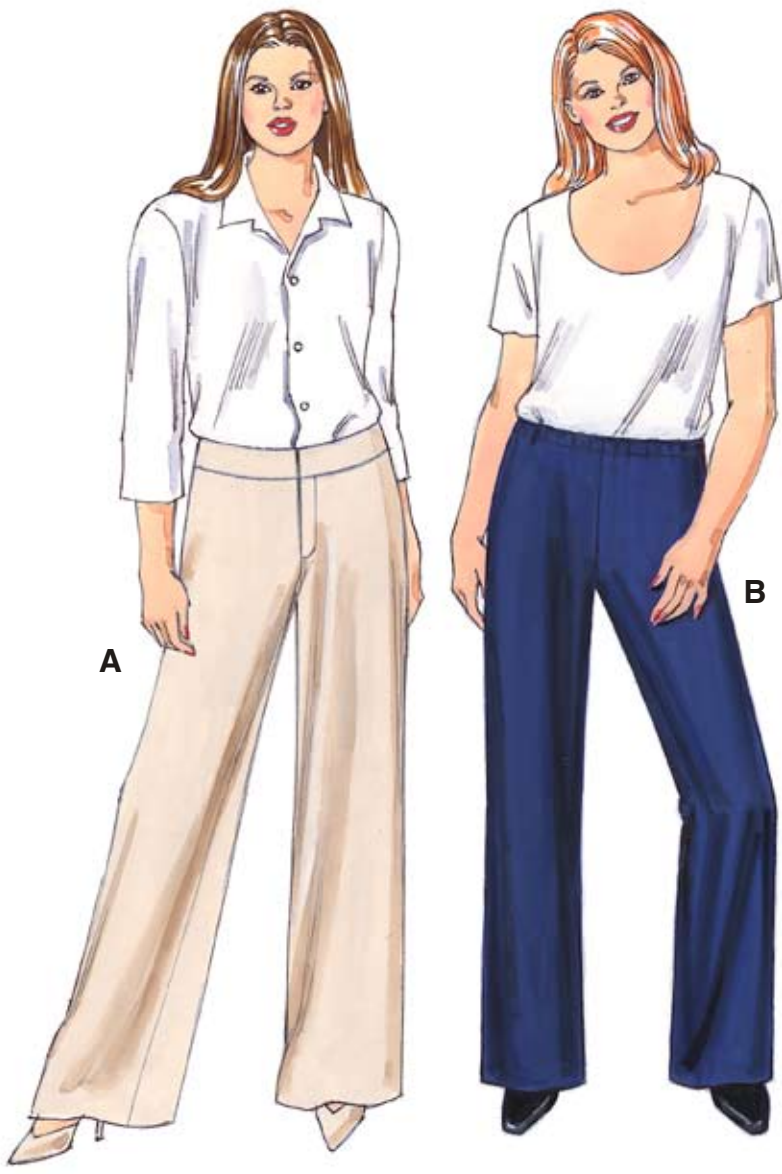
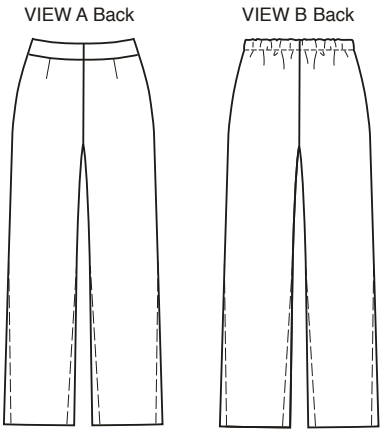




blouse
3015

Women's pants can be made with straight wide legs or slightly tapered legs. View A fitted pants have front fly zipper, fits slightly below waist, and has shaped waistband. View B pull-on pants have elastic in casing at waist.

PLUS SIZES



PLUS SIZE

KWIK·SEW®
3469 price

WOMEN'S PANTS DESIGNED FOR MEDIUM WEIGHT WOVEN FABRICS
 Sizes: 1X-2X-3X-4X Suggested Fabrics: Twill, gabardine, linen, crepe, flannel, polyester-rayon suitings

Size	1X	2X	3X	4X	
Finished Inside Leg Seam	30" (76 cm) – All Sizes				
View A & B	30" (76 cm) – All Sizes				
Finished Width at Bottom Edge of Leg					
Wide Leg	26 3/4 (68)	27 1/2 (70)	28 1/4 (72)	29 (74)	" (cm)
Tapered Leg	22 (56)	22 3/4 (58)	23 1/2 (60)	24 1/2 (62)	" (cm)
Material Required: Fabric requirement allows for nap, one-way design or shading. Extra fabric may be needed to match design or for shrinkage.					
Fabric 60" (152 cm) Wide					
View A	2 5/8 (2.40)	2 5/8 (2.40)	2 5/8 (2.40)	2 3/4 (2.55)	yd (m)
View B	2 3/4 (2.55)	2 3/4 (2.55)	2 3/4 (2.55)	2 7/8 (2.65)	yd (m)
Fabric 45" (115 cm) Wide					
View A	3 1/4 (3.00)	3 1/4 (3.00)	3 1/2 (3.20)	3 1/2 (3.20)	yd (m)
View B	2 3/4 (2.55)	3 (2.75)	3 (2.75)	3 (2.75)	yd (m)
Fusable Interfacing 24" (60 cm) Wide					
View B	3/4 (0.70)	3/4 (0.70)	7/8 (0.80)	7/8 (0.80)	yd (m)
Notions: Thread. VIEW A: One 9" (22 cm) zipper or longer (zipper will be trimmed), two hook & eye sets. VIEW B: 1 1/4 yd (1.15 m) of 1" (2.5 cm) wide elastic.					