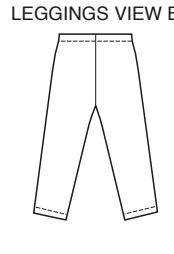
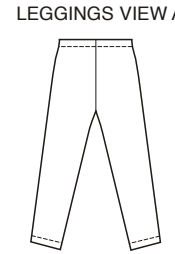


Girls' tunics and leggings. Pullover tunics have neckline finished with self-fabric neckband. View A has full-length sleeves and is shown with purchased belt. View B has short sleeves and casing with self-fabric drawstring at hip. Close-fitting leggings, without side seams, have elastic at waist. View A are full-length. View B are cropped.



KWIK-SEW
price **3476**

TUNICS DESIGNED FOR STRETCH KNITS ONLY WITH 25% STRETCH
Suggested Fabrics: Interlock, matte jersey, velour, lightweight sweater knits
LEGGINGS DESIGNED FOR STRETCH KNITS ONLY WITH 75% STRETCH
Suggested Fabrics: Fabrics with spandex Lycra®, cotton Lycra®, swimwear fabric

GIRLS' TUNICS & LEGGINGS
Sizes: XS(4-5)-S(6)-M(7-8)-L(10)-XL(12-14)

DUAL INSTRUCTIONS INCLUDED: SERGER (OVERLOCK) AND STANDARD SEWING MACHINES

Standard Body Measurements:

| Size | XS (4-5) | S (6) | M (7-8) | L (10) | XL (12-14) | |
|--------|-------------|-------------|-------------|-------------|------------|--------|
| Height | 42 (107) | 46 (117) | 50 (127) | 55 (140) | 60 (152) | " (cm) |
| Chest | 23 1/2 (60) | 25 (64) | 26 1/2 (67) | 28 1/2 (72) | 31 (79) | " (cm) |
| Waist | 22 (56) | 23 (58) | 24 (61) | 25 (64) | 27 (68) | " (cm) |
| Hip | 24 (61) | 25 1/2 (65) | 27 1/2 (70) | 30 (76) | 32 (81) | " (cm) |

Finished Length of Tunic at Center Back from Neckline

| | | | | | | |
|------------|-------------|---------|---------|---------|-------------|--------|
| View A & B | 18 1/2 (47) | 20 (51) | 22 (56) | 24 (61) | 26 1/2 (67) | " (cm) |
|------------|-------------|---------|---------|---------|-------------|--------|

Finished Inside Leg Seam of Leggings

| | | | | | | |
|--------|---------|---------|---------|-------------|-------------|--------|
| View A | 16 (41) | 18 (46) | 20 (51) | 22 1/2 (57) | 25 1/2 (65) | " (cm) |
| View B | 13 (33) | 15 (38) | 17 (43) | 19 (48) | 21 1/2 (55) | " (cm) |

Material Required: Fabric requirement allows for nap, one-way design or shading. Extra fabric may be needed to match design or for shrinkage.

Fabric 60" (152 cm) Wide

| | | | | | | |
|-----------------|------------|------------|--------------|--------------|--------------|--------|
| Tunic View A | 3/4 (0.70) | 7/8 (0.80) | 1 3/8 (1.30) | 1 1/2 (1.40) | 1 1/2 (1.40) | yd (m) |
| Tunic View B | 1 (0.95) | 1 (0.95) | 1 (0.95) | 1 1/8 (1.05) | 1 1/4 (1.15) | yd (m) |
| Leggings View A | 3/4 (0.70) | 7/8 (0.80) | 1 (0.95) | 1 (0.95) | 1 1/8 (1.05) | yd (m) |
| Leggings View B | 3/4 (0.70) | 3/4 (0.70) | 7/8 (0.80) | 1 (0.95) | 1 (0.95) | yd (m) |

Notions: Thread. TUNIC: Scrap piece of fusible interfacing. LEGGINGS: 3/4 yd (0.70 m) of 3/4" (2 cm) wide elastic.