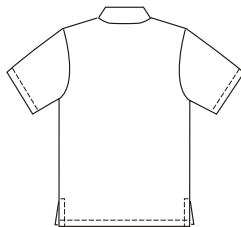




VIEW A, B & C
Back



Men's shirts have collar, short sleeves, and side hemline slits. View A has breast pocket. View B has contrast right front inset and breast pocket with contrast band at top edge. View C has contrast center panels.

KWIK·SEW®
3484 price

MEN'S SHIRTS DESIGNED FOR LIGHT WEIGHT WOVEN FABRICS
Sizes: S-M-L-XL-XXL Suggested Fabrics: Cotton, cotton types, linen, broadcloth, chambray, challis, rayon & blends

Standard Body Measurements:

Size	S	M	L	XL	XXL	
Chest	34-36 (86-91)	38-40 (96-101)	42-44 (106-111)	46-48 (116-122)	50-52 (127-132)	" (cm)
Hip	35-37 (89-94)	39-41 (99-104)	43-45 (109-114)	47-49 (119-124)	51-53 (129-134)	" (cm)
Finished Length at Center Back						
All Views	28 1/2 (72)	29 1/2 (75)	30 1/2 (77)	31 1/2 (80)	32 1/2 (82)	" (cm)

Material Required: Fabric requirement allows for nap, one-way design or shading.
Extra fabric may be needed to match design or for shrinkage.

Fabric 60" (152 cm) Wide

View A	1 3/4 (1.60)	1 7/8 (1.75)	1 7/8 (1.75)	2 (1.85)	2 1/8 (1.95)	yd (m)
View B	1 7/8 (1.75)	1 7/8 (1.75)	2 (1.85)	2 (1.85)	2 1/8 (1.95)	yd (m)
View C	1 3/8 (1.30)	1 1/2 (1.40)	1 1/2 (1.40)	1 7/8 (1.75)	2 (1.85)	yd (m)

Fabric 45" (115 cm) Wide

View A	2 1/8 (1.95)	2 1/4 (2.10)	2 1/4 (2.10)	2 5/8 (2.40)	2 3/4 (2.55)	yd (m)
View B	2 1/4 (2.10)	2 1/4 (2.10)	2 3/8 (2.20)	2 5/8 (2.40)	2 3/4 (2.55)	yd (m)
View C	2 1/8 (1.95)	2 1/4 (2.10)	2 1/4 (2.10)	2 5/8 (2.40)	2 3/4 (2.55)	yd (m)

Contrast Fabric 12" (30 cm) Wide (minimum width)

View B	1 (0.95)	1 (0.95)	1 (0.95)	1 (0.95)	1 1/8 (1.05)	yd (m)
View C	7/8 (0.80)	1 (0.95)	1 (0.95)	1 (0.95)	1 (0.95)	yd (m)

Fusible Interfacing 24" (60 cm) Wide

All Views	1 (0.95)	1 (0.95)	1 (0.95)	1 (0.95)	1 1/8 (1.05)	yd (m)
-----------	----------	----------	----------	----------	--------------	--------

Notions: Thread. Five 5/8" (15 mm) buttons.