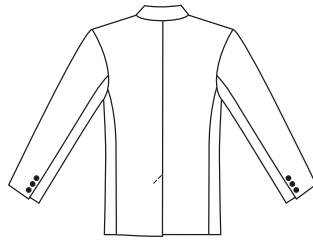


VIEW A & B Back



B



A



MEN'S

Men's Blazer has half-lining, two button closure, two piece sleeves, back vent and breast pocket. View A has welt pockets with flaps. View B has patch pockets.

**KWIK·SEW®**  
price **3485**

**DESIGNED FOR MEDIUM WEIGHT WOVEN FABRICS**

Suggested Fabrics: Twill, cotton, denim, gabardine, corduroy, seersucker, velveteen, linen, wool, silk & rayon suitings.

**MEN'S BLAZER**  
Sizes: S-M-L-XL-XL

**Standard Body Measurements:**

Size	S	M	L	XL	XXL	
Chest	34-36 (86-91)	38-40 (96-101)	42-44 (106-111)	46-48 (116-122)	50-52 (127-132)	" (cm)
Waist	28-30 (71-76)	32-34 (81-86)	36-38 (91-96)	40-42 (101-106)	44-46 (111-116)	" (cm)
Hip	35-37 (89-94)	39-41 (99-104)	43-45 (109-114)	47-49 (119-124)	51-53 (129-134)	" (cm)
Finished Length at Center Back						
View A & B	29 3/4 (75)	30 1/2 (77)	31 1/4 (79)	32 (81)	32 3/4 (83)	" (cm)

**Material Required:** Fabric requirement allows for nap, one-way design or shading. Extra fabric may be needed to match design or for shrinkage.

Fabric 60" (152 cm) Wide	View A & B	S	M	L	XL	XXL	
Fabric 45" (115 cm) Wide	View A & B	3 1/2 (3.20)	3 1/2 (3.20)	3 5/8 (3.35)	3 3/4 (3.45)	4 1/2 (4.15)	yd (m)
Lining 45" (115 cm) Wide	View A & B	1 1/4 (1.15)	1 3/8 (1.30)	1 5/8 (1.50)	1 3/4 (1.60)	1 3/4 (1.60)	yd (m)
Fusible Interfacing 24" (60 cm) Wide	View A & B	2 5/8 (2.40)	2 5/8 (2.40)	2 3/4 (2.55)	2 7/8 (2.65)	3 (2.75)	yd (m)

**Notions:** Thread, two 1" (25 mm) buttons, six 5/8" (15 mm) buttons. Optional shoulder pads.