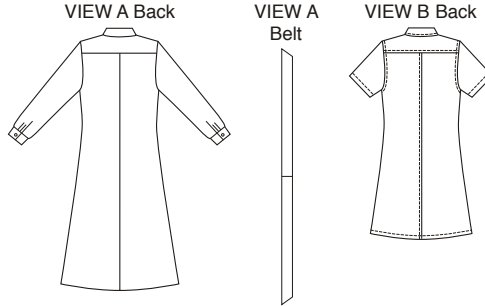


Misses' dresses have collar, front and back yokes, two panel fronts, decorative pocket flaps in front yoke seams, and front button closure. Topstitching details are optional. View A has full-length sleeves with cuffs, and self fabric tie belt. View B has short sleeves and is shown with purchased belt



**KWIK·SEW®**  
**3488** price

**MISSES' DRESSES** DESIGNED FOR LIGHT TO MEDIUM WEIGHT WOVEN FABRIC  
 Sizes: XS-S-M-L-XL Suggested Fabrics: Linen, lightweight denim, twill, cotton types, challis, silk, silk types.

**Standard Body Measurements:**

Size	XS	S	M	L	XL	
Bust	31 1/2-32 1/2 (80-83)	34-35 1/2 (86-90)	37-38 1/2 (94-98)	40-41 1/2 (102-106)	43-45 (110-114)	" (cm)
Waist	22 1/2-23 1/2 (57-60)	24 3/4-26 (63-66)	27 1/2-29 (70-74)	31-33 (79-84)	35-37 (89-94)	" (cm)
Hip	32 1/4-34 (82-86)	35 1/2-37 (90-94)	38 1/2-40 (98-102)	41 1/2-43 1/2 (106-110)	45-47 (115-120)	" (cm)
Back Waist Length	15 1/2 (39)	16 (41)	16 1/2 (42)	17 (43)	17 (43)	" (cm)
Finished Length from Waist						
View A	34" (86 cm) All Sizes					
View B	22" (56 cm) All Sizes					

**Material Required:** Fabric requirement allows for nap, one-way design or shading. Extra fabric may be needed to match design or for shrinkage.

**Fabric 60" (152 cm) Wide**

View A	2 7/8 (2.65)	3 (2.75)	3 (2.75)	3 1/8 (2.85)	3 1/4 (3.00)	yd (m)
View B	2 (1.85)	2 (1.85)	2 1/8 (1.95)	2 1/8 (1.95)	2 1/4 (2.10)	yd (m)

**Fabric 45" (115 cm) Wide**

View A	3 5/8 (3.35)	3 3/4 (3.45)	4 1/8 (3.80)	4 1/4 (3.90)	4 3/8 (4.00)	yd (m)
View B	2 1/4 (2.10)	2 1/4 (2.10)	3 (2.75)	3 (2.75)	3 (2.75)	yd (m)

**Fusible Interfacing 24" (60 cm) Wide**

View A	1 3/8 (1.30)	1 3/8 (1.30)	1 3/8 (1.30)	1 3/8 (1.30)	1 3/8 (1.30)	yd (m)
View B	1 (0.95)	1 (0.95)	1 (0.95)	1 (0.95)	1 (0.95)	yd (m)

**Notions:** Thread. VIEW A: Twelve 5/8" (15 mm) buttons. VIEW B: Nine 5/8" (15 mm) buttons.