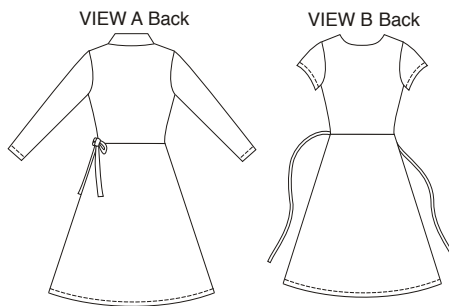


Misses' fitted wrap dresses have waist seam, flared skirt with shaped front edge, V-neckline, bust darts, and self-fabric ties. View A ties at the side and has collar and full length sleeves. View B has wrap around ties that tie in front, and very short sleeves.



DRESSES

KWIK & EASY™

KWIK·SEW®
price **3489**

DESIGNED FOR STRETCH KNITS ONLY WITH 35% STRETCH ACROSS THE GRAIN
Suggested Fabrics: Interlock, matte jersey, stretch velour, jersey, panne.

MISSSES' DRESSES
Sizes: XS-S-M-L-XL

Standard Body Measurements:

Size	XS	S	M	L	XL	
Bust	31 1/2-32 1/2 (80-83)	34-35 1/2 (86-90)	37-38 1/2 (94-98)	40-41 1/2 (102-106)	43-45 (110-114)	" (cm)
Waist	22 1/2-23 1/2 (57-60)	24 3/4-26 (63-66)	27 1/2-29 (70-74)	31-33 (79-84)	35-37 (89-94)	" (cm)
Hip	32 1/4-34 (82-86)	35 1/2-37 (90-94)	38 1/2-40 (98-102)	41 1/2-43 1/2 (106-110)	45-47 (115-120)	" (cm)
Back Waist Length	15 1/2 (39)	16 (41)	16 1/2 (42)	17 (43)	17 (43)	" (cm)
Finished Length from Waist	View A & B 26" (66 cm)—All Sizes					

Material Required: Fabric requirement allows for nap, one-way design or shading.
Extra fabric may be needed to match design or for shrinkage.

Fabric 60" (152 cm) Wide

View A	2 (1.85)	2 1/8 (1.95)	2 1/4 (2.10)	2 1/2 (2.30)	2 5/8 (2.40)	yd (m)
View B	2 1/8 (1.95)	2 1/8 (1.95)	2 1/4 (2.10)	2 1/4 (2.10)	2 3/8 (2.20)	yd (m)

Fusible Interfacing 24" (60 cm) Wide

View A	3/4 (0.70)	3/4 (0.70)	3/4 (0.70)	7/8 (0.80)	7/8 (0.80)	yd (m)
View B	5/8 (0.60)	5/8 (0.60)	3/4 (0.70)	3/4 (0.70)	3/4 (0.70)	yd (m)

Notions: Thread. VIEW A: 3/4 yd (0.70 m) of 1/4" (6 mm) wide ribbon for inside ties.