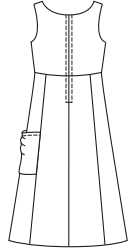


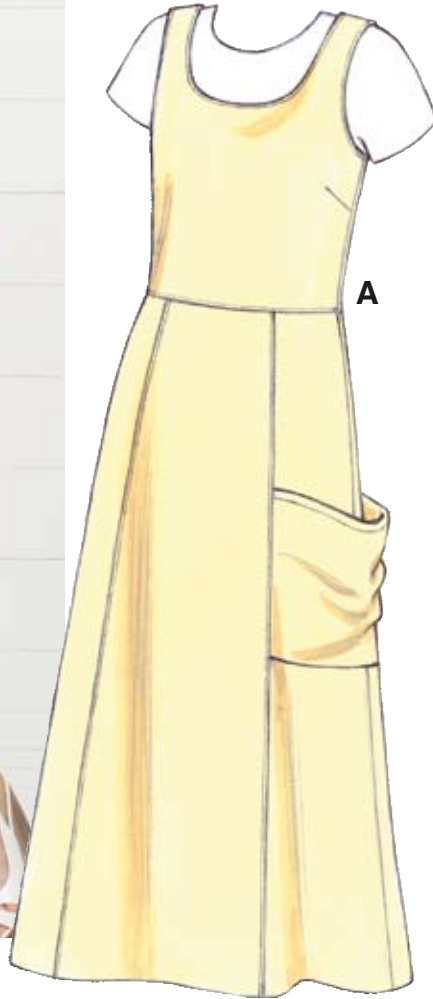
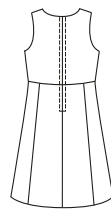


Misses' semi-fitted jumpers have bust darts, waist seam, slightly A-line skirt with panels, and center back zipper. Neckline and armholes are finished with one piece facings. View A has scoop neckline, and a large pocket on left side. View B has wide V-neckline.

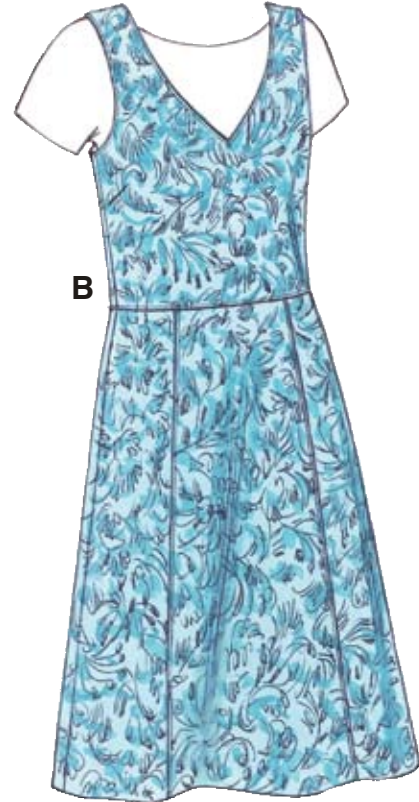
VIEW A Back



VIEW B Back



A



B

KWIK·SEW®
3493 price

MISSES' JUMPERS DESIGNED FOR LIGHT TO MEDIUM WEIGHT WOVEN FABRICS
 SIZES: XS-S-M-L-XL Suggested Fabrics: Cotton, cotton types, linen, lightweight denim, twill, rayon and blends.

Standard Body Measurements:

Size	XS	S	M	L	XL	
Bust	31 1/2-32 1/2 (80-83)	34-35 1/2 (86-90)	37-38 1/2 (94-98)	40-41 1/2 (102-106)	43-45 (110-114)	" (cm)
Waist	22 1/2-23 1/2 (57-60)	24 3/4-26 (63-66)	27 1/2-29 (70-74)	31-33 (79-84)	35-37 (89-94)	" (cm)
Hip	32 1/4-34 (82-86)	35 1/2-37 (90-94)	38 1/2-40 (98-102)	41 1/2-43 1/2 (106-110)	45-47 (115-120)	" (cm)
Back Waist Length	15 1/2 (39)	16 (41)	16 1/2 (42)	17 (43)	17 (43)	" (cm)
Finished Length From Waist						
View A	34" (86 cm) —All Sizes					
View B	24" (61 cm) —All Sizes					

Material Required: Fabric requirement allows for nap, one-way design or shading. Extra fabric may be needed to match design or for shrinkage.

Fabric 60" (152 cm) Wide

View A	2 5/8 (2.40)	2 5/8 (2.40)	2 5/8 (2.40)	2 5/8 (2.40)	2 5/8 (2.40)	yd (m)
View B	2 (1.85)	2 1/8 (1.95)	2 1/8 (1.95)	2 1/8 (1.95)	2 1/4 (2.10)	yd (m)

Fabric 45" (115 cm) Wide

View A	3 1/4 (3.00)	3 3/8 (3.10)	3 3/8 (3.10)	3 1/2 (3.20)	3 3/4 (3.45)	yd (m)
View B	2 3/8 (2.20)	2 3/8 (2.20)	2 1/2 (2.30)	2 5/8 (2.40)	2 7/8 (2.65)	yd (m)

Notions: Thread, one 20" (50 cm) zipper, Optional: Fusible interfacing.