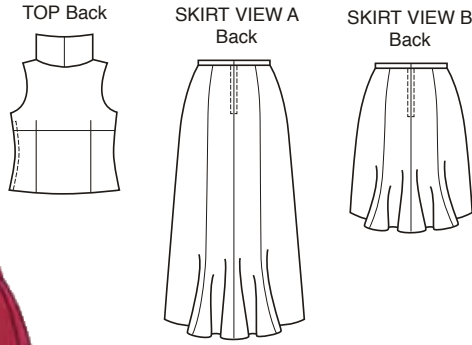


Misses' Skirts and Top. Fitted skirts have waistband, zipper at center back, straight cut front, and extreme flare at lower edge of back panels. Fitted, sleeveless top has lined bodice, boat neckline with cowl collar, empire waist with darts, panel seams on lower top, and side seam zipper closure.



SKIRTS & TOPS

KWIK·SEW®
price **3494**

SKIRTS DESIGNED FOR MEDIUM WEIGHT WOVEN FABRICS
Suggested Fabrics: Crepe, gabardine, rayon suitings, wool and linen
TOP DESIGNED FOR LIGHTWEIGHT WOVEN FABRICS
Suggested Fabrics: Challis, georgette, silk, silk-like fabrics, crepe, rayon and blends

MISSES' SKIRTS & TOPS
Sizes: XS-S-M-L-XL

Standard Body Measurements:

Size	XS	S	M	L	XL	
Bust	31 1/2-32 1/2 (80-83)	34-35 1/2 (86-90)	37-38 1/2 (94-98)	40-41 1/2 (102-106)	43-45 (110-114)	" (cm)
Waist	22 1/2-23 1/2 (57-60)	24 3/4-26 (63-66)	27 1/2-29 (70-74)	31-33 (79-84)	35-37 (89-94)	" (cm)
Hip	32 1/4-34 (82-86)	35 1/2-37 (90-94)	38 1/2-40 (98-102)	41 1/2-43 1/2 (106-110)	45-47 (115-120)	" (cm)
Back Waist Length	15 1/2 (39)	16 (41)	16 1/2 (42)	17 (43)	17 (43)	" (cm)
Finished Length of Skirt	View A 42" (106 cm)—All Sizes View B 24 1/2" (62 cm)—All Sizes					
Finished Length of Top at Center Back From Natural Neckline	20 (51)	20 1/2 (52)	21 (53)	21 1/2 (55)	22 (56)	" (cm)

Material Required: Fabric requirement allows for nap, one-way design or shading. Extra fabric may be needed to match design or for shrinkage.

Fabric 60" (152 cm) Wide

Top	1 1/4 (1.15)	1 3/8 (1.30)	1 3/8 (1.30)	1 3/8 (1.30)	1 1/2 (1.40)	yd (m)
Skirt View A	2 5/8 (2.40)	2 5/8 (2.40)	2 5/8 (2.40)	2 5/8 (2.40)	2 5/8 (2.40)	yd (m)
Skirt View B	1 5/8 (1.50)	1 5/8 (1.50)	1 5/8 (1.50)	1 5/8 (1.50)	1 5/8 (1.50)	yd (m)

Fabric 45" (115 cm) Wide

Top	1 3/4 (1.60)	1 3/4 (1.60)	1 7/8 (1.75)	1 7/8 (1.75)	1 7/8 (1.75)	yd (m)
Skirt View A	3 (2.75)	3 1/4 (3.00)	3 3/8 (3.10)	3 7/8 (3.55)	3 7/8 (3.55)	yd (m)
Skirt View B	1 3/4 (1.60)	1 3/4 (1.60)	1 3/4 (1.60)	1 3/4 (1.60)	1 3/4 (1.60)	yd (m)

Lining 45" (115 cm) Wide

Top	1/2 (0.50)	1/2 (0.50)	1 (0.95)	1 (0.95)	1 (0.95)	yd (m)
-----	------------	------------	----------	----------	----------	--------

Fusible Interfacing 24" (60 cm) Wide

Top	1/4 (0.25)	1/4 (0.25)	1/4 (0.25)	1/4 (0.25)	1/4 (0.25)	yd (m)
Skirt View A & B	7/8 (0.80)	1 (0.95)	1 (0.95)	1 1/8 (1.05)	1 1/4 (1.15)	yd (m)

Notions: Thread. TOP: One 12" (30 cm) zipper. SKIRT VIEW A & B: One 7" (18 cm) zipper, one hook & eye set.