



A



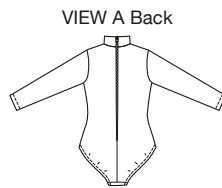
B



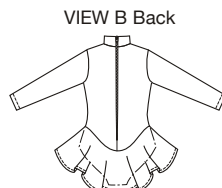
C



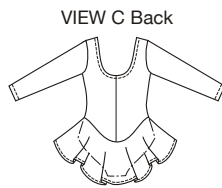
D



VIEW A Back



VIEW B Back



VIEW C Back



VIEW D Back

Misses' leotards have leg openings finished with elastic. View A and B have mock turtle neck, zipper at center back, and full length sleeves. View B, C, and D have an attached circular skirt. View C & D have scoop neckline finished with elastic. View C has full length sleeves. View D has short sleeves.

KWIK•SEW®

price **3502**

DESIGNED FOR TWO-WAY STRETCH FABRIC WITH 75% STRETCH
Suggested Fabrics: Fabrics with spandex Lycra®, swimwear fabric, cotton Lycra®, stretch velvet

MISSES' LEOTARDS
Sizes: XS-S-M-L-XL

Size	XS	S	M	L	XL	
Material Required: Fabric requirement allows for nap, one-way design or shading. Extra fabric may be needed to match design or for shrinkage.						
Fabric 60" (152 cm) Wide With Greatest Degree of Stretch on Crosswise Grain						
View A	1 (0.95)	1 (0.95)	1 1/8 (1.05)	1 3/8 (1.30)	1 1/2 (1.40)	yd (m)
View B	1 3/4 (1.60)	1 7/8 (1.75)	1 7/8 (1.75)	2 (1.85)	2 (1.85)	yd (m)
View C	1 5/8 (1.50)	1 3/4 (1.60)	1 7/8 (1.75)	1 7/8 (1.75)	2 (1.85)	yd (m)
View D	1 1/2 (1.40)	1 1/2 (1.40)	1 5/8 (1.50)	1 5/8 (1.50)	1 7/8 (1.75)	yd (m)
Fabric 60" (152 cm) Wide With Greatest Degree of Stretch on Lengthwise Grain						
View A	7/8 (0.80)	1 (0.95)	1 1/8 (1.05)	1 1/8 (1.05)	1 1/4 (1.15)	yd (m)
View B	1 1/2 (1.40)	1 5/8 (1.50)	1 3/4 (1.60)	1 7/8 (1.75)	2 1/8 (1.95)	yd (m)
View C	1 1/2 (1.40)	1 5/8 (1.50)	1 3/4 (1.60)	1 7/8 (1.75)	2 1/8 (1.95)	yd (m)
View D	1 1/8 (1.05)	1 1/4 (1.15)	1 3/8 (1.30)	1 1/2 (1.40)	1 1/2 (1.40)	yd (m)
Fabric 45" (115 cm) Wide With Greatest Degree of Stretch on Lengthwise Grain						
View A	1 3/8 (1.30)	1 1/2 (1.40)	1 5/8 (1.50)	1 3/4 (1.60)	1 7/8 (1.75)	yd (m)
View B	2 (1.85)	2 1/8 (1.95)	2 1/4 (2.10)	2 3/8 (2.20)	2 5/8 (2.40)	yd (m)
View C	2 (1.85)	2 1/8 (1.95)	2 1/4 (2.10)	2 3/8 (2.20)	2 5/8 (2.40)	yd (m)
View D	1 3/4 (1.60)	1 7/8 (1.75)	2 1/8 (1.95)	2 1/4 (2.10)	2 3/8 (2.20)	yd (m)

Notions: Thread. VIEW A & B: one 20" (50 cm) zipper, 1 1/2 yd (1.40 m) of 3/8" (1 cm) wide swimwear elastic. VIEW C & D: 2 1/2 yd (2.30 m) of 3/8" (1 cm) wide swimwear elastic.

ACTIVE & SWIMWEAR