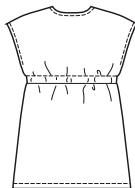
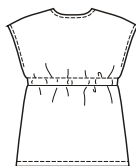




VIEW A Back



VIEW B Back



Misses' Tops have V-neckline, extended shoulders forming sleeves, empire waist with casing and self fabric tie, and outside edges are finished with narrow hems. View A has an open front. View B top is pull-over style.

KWIK•SEW®
price **3505**

DESIGNED FOR LIGHTWEIGHT WOVEN FABRICS
Suggested Fabrics: Georgette, cotton types, gauze, handkerchief linen, challis, rayon and blends, silk types.

MISSES' TOPS
Sizes: XS-S-M-L-XL

Size	XS	S	M	L	XL	
Finished Length At Center Back						
View A	30 (77)	30 1/2 (78)	31 (79)	31 3/4 (81)	32 1/2 (82)	" (cm)
View B	27 (69)	27 1/2 (70)	28 (71)	28 1/2 (72)	28 1/2 (72)	" (cm)
Material Required: Fabric requirement allows for nap, one-way design or shading. Extra fabric may be needed to match design or for shrinkage.						
Fabric 60" (152 cm) Wide						
View A	1 3/4 (1.60)	1 3/4 (1.60)	1 3/4 (1.60)	1 7/8 (1.75)	2 (1.85)	yd (m)
View B	1 5/8 (1.50)	1 3/4 (1.60)	1 3/4 (1.60)	1 7/8 (1.75)	2 (1.85)	yd (m)
Fabric 45" (115 cm)						
View A	2 3/8 (2.20)	2 3/8 (2.20)	2 1/2 (2.30)	2 1/2 (2.30)	2 5/8 (2.40)	yd (m)
View B	2 1/4 (2.10)	2 3/8 (2.20)	2 3/8 (2.20)	2 1/2 (2.30)	2 1/2 (2.30)	yd (m)
Notions: Thread.						