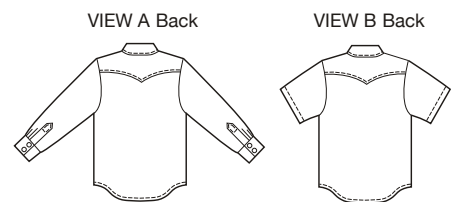




MEN'S

Men's western shirts have collar with stand, decorative front and back yokes, front tab, pockets with flaps, shirt-tail hemline, and button or snap closure. View A has full length sleeves with cuffs. View B has short sleeves.



KWIK•SEW®
price **3506**

DESIGNED FOR LIGHT TO MEDIUM WEIGHT WOVEN FABRICS
Suggested Fabrics: Cotton, cotton types, chambray, broadcloth, gingham, calico

MEN'S SHIRTS
Sizes: S-M-L-XL-XXL

Size	S	M	L	XL	XXL	
Finished Length at Center Back						
View A & B	31 (79)	31 1/2 (81)	32 1/2 (83)	33 1/2 (85)	34 (87)	" (cm)
Material Required: Fabric requirement allows for nap, one-way design or shading. Extra fabric may be needed to match design or for shrinkage.						
Fabric 60" (152 cm) Wide						
View A	2 1/8 (1.95)	2 1/8 (1.95)	2 1/4 (2.10)	2 1/2 (2.30)	2 1/2 (2.30)	yd (m)
View B	1 7/8 (1.75)	1 7/8 (1.75)	1 7/8 (1.75)	2 1/4 (2.10)	2 1/4 (2.10)	yd (m)
Fabric 45" (115 cm) Wide						
View A	2 7/8 (2.65)	3 (2.75)	3 1/8 (2.85)	3 1/2 (3.20)	3 5/8 (3.35)	yd (m)
View B	2 3/8 (2.20)	2 3/8 (2.20)	2 1/2 (2.30)	3 (2.75)	3 1/8 (2.85)	yd (m)
Fusible Interfacing 24" (60 cm) Wide						
View A & B	7/8 (0.80)	7/8 (0.80)	7/8 (0.80)	1 (0.95)	1 (0.95)	yd (m)
Notions: Thread. VIEW A: one 5/8" (15 mm) button and twelve 5/8" (15 mm) buttons or snaps, VIEW B: one 5/8" (15 mm) button and eight 5/8" (15 mm) buttons or snaps.						