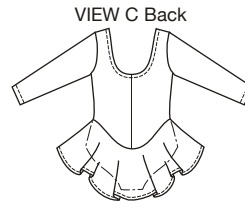
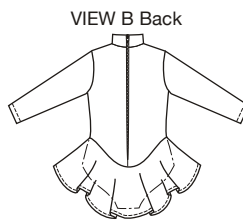
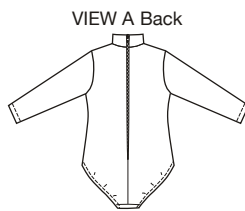




Girls' leotards have leg openings finished with elastic. View A and B have mock turtleneck, zipper at center back, and full length sleeves. View C and D have scoop neckline finished with elastic. View C has full length sleeves. View D has short sleeves. View B, C, and D have an attached circular skirt.

KWIK•SEW®
3507
3508 price



GIRLS' LEOTARDS

3507 Sizes: 4-5-6-7

3508 Sizes: 8-10-12-14

DESIGNED FOR TWO-WAY STRETCH FABRICS WITH 75% STRETCH

Suggested Fabrics: Cotton Lycra®, nylon Lycra®, swimwear fabric with spandex/ Lycra®, stretch velvet with Lycra®

Size	4	5	6	7	8	10	12	14	
Material Required: Fabric requirement allows for nap, one-way design or shading. Extra fabric may be needed to match design or for shrinkage.									
Fabric 60" (152 cm) Wide with Greatest Degree of Stretch on Crosswise Grain									
View A	5/8 (0.60)	3/4 (0.70)	3/4 (0.70)	3/4 (0.70)	3/4 (0.70)	3/4 (0.70)	7/8 (0.80)	7/8 (0.80)	yd (m)
View B	1 (0.95)	1 (0.95)	1 (0.95)	1 1/8 (1.05)	1 1/8 (1.05)	1 1/4 (1.15)	1 1/4 (1.15)	1 3/8 (1.30)	yd (m)
View C	7/8 (0.80)	1 (0.95)	1 (0.95)	1 (0.95)	1 1/8 (1.05)	1 1/4 (1.15)	1 1/4 (1.15)	1 3/8 (1.30)	yd (m)
View D	7/8 (0.80)	1 (0.95)	1 (0.95)	1 (0.95)	1 (0.95)	1 1/8 (1.05)	1 1/8 (1.05)	1 1/8 (1.05)	yd (m)
Fabric 60" (152 cm) Wide with Greatest Degree of Stretch on Lengthwise Grain									
View A	3/4 (0.70)	3/4 (0.70)	3/4 (0.70)	7/8 (0.80)	7/8 (0.80)	7/8 (0.80)	7/8 (0.80)	1 (0.95)	yd (m)
View B	1 (0.95)	1 1/8 (1.05)	1 1/8 (1.05)	1 1/8 (1.05)	1 1/4 (1.15)	1 1/4 (1.15)	1 3/8 (1.30)	1 1/2 (1.40)	yd (m)
View C	1 (0.95)	1 1/8 (1.05)	1 1/8 (1.05)	1 1/8 (1.05)	1 1/8 (1.05)	1 1/4 (1.15)	1 1/4 (1.15)	1 1/4 (1.15)	yd (m)
View D	1 (0.95)	1 1/8 (1.05)	1 1/8 (1.05)	1 1/8 (1.05)	1 1/4 (1.15)	1 1/4 (1.15)	1 1/4 (1.15)	1 3/8 (1.30)	yd (m)
Fabric 45" (115 cm) Wide with Greatest Degree of Stretch on Lengthwise Grain									
View A	3/4 (0.70)	3/4 (0.70)	3/4 (0.70)	7/8 (0.80)	1 1/8 (1.05)	1 1/8 (1.05)	1 1/4 (1.15)	1 1/2 (1.40)	yd (m)
View B	1 1/8 (1.05)	1 1/4 (1.15)	1 1/4 (1.15)	1 3/8 (1.30)	1 5/8 (1.50)	1 3/4 (1.60)	1 3/4 (1.60)	1 3/4 (1.60)	yd (m)
View C	1 1/8 (1.05)	1 1/4 (1.15)	1 1/4 (1.15)	1 3/8 (1.30)	1 5/8 (1.50)	1 3/4 (1.60)	1 3/4 (1.60)	1 3/4 (1.60)	yd (m)
View D	1 (0.95)	1 1/8 (1.05)	1 1/8 (1.05)	1 1/8 (1.05)	1 1/4 (1.15)	1 1/4 (1.15)	1 3/8 (1.30)	1 3/8 (1.30)	yd (m)
Notions: Thread. VIEW A & B: One zipper 12" (30 cm) for size 4; 14" (35 cm) for sizes 5-14.									