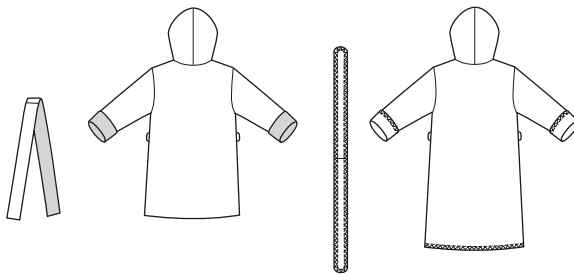




BABY & TODDLER

VIEW A Back

VIEW B Back



Toddlers' wrap robes have extended shoulders, hood, fold-up cuffs, patch pockets, belt loops and self fabric tie belt. View A is lined with contrast fabric. View B single layer robe has all outside edges finished with serger (overlock) machine or decorative edge stitching; wrong side of fabric will show on hood, belt, cuffs and upper part of pockets.

KWIK•SEW®
price **3509**

DESIGNED FOR WOVEN & FIRM KNIT FABRICS

Suggested Fabrics: Cotton, cotton types, flannel, terry cloth, Polarfleece®, sweatshirt fleece, interlock.

NOTE: WRONG SIDE OF FABRIC WILL SHOW ON VIEW B

TODDLERS' ROBES
Sizes: T1-T2-T3-T4

Size	T1	T2	T3	T4	
Finished Length at Center Back					
View A	19 (48)	20 1/2 (52)	22 (56)	24 (61)	" (cm)
View B	21 (53)	23 (58)	25 (63)	27 (68)	" (cm)
Material Required: Fabric requirement allows for nap, one-way design or shading. Extra fabric may be needed to match design or for shrinkage.					
Fabric 60" (152 cm) Wide					
View A Fabric & Contrast Each	1 (0.95)	1 1/8 (1.05)	1 1/4 (1.15)	1 1/4 (1.15)	yd (m)
View B	1 1/8 (1.05)	1 1/8 (1.05)	1 1/4 (1.15)	1 3/8 (1.30)	yd (m)
Fabric 45" (115 cm) Wide					
View A Fabric & Contrast Each	1 1/4 (1.15)	1 3/8 (1.30)	1 3/8 (1.30)	1 1/2 (1.40)	yd (m)
View B	1 3/8 (1.30)	1 3/8 (1.30)	1 1/2 (1.40)	1 5/8 (1.50)	yd (m)
Notions: Thread, scrap piece of fusible interfacing.					