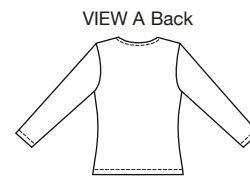




PLUS SIZE

Women's close fitting pull-over tops have bust darts, overlapped front, and deep V-neckline finished with narrow hem. View A has full length sleeves. View B is sleeveless and armholes are finished with self-fabric bindings.



KWIK•SEW®
price **3515**

DESIGNED FOR STRETCH KNITS ONLY WITH 25% STRETCH ACROSS THE GRAIN
Suggested Fabrics: Interlock, textured knits, stretch velour, jersey, matte jersey, double knit

WOMEN'S TOPS
Sizes: 1X-2X-3X-4X

Size	1X	2X	3X	4X	
Finished Length at Center Back					
View A & B	24 1/2 (62)	24 3/4 (63)	25 (64)	25 1/2 (65)	" (cm)
Material Required: Fabric requirement allows for nap, one-way design or shading. Extra fabric may be needed to match design or for shrinkage.					
Fabric 60" (152 cm) Wide					
View A	1 5/8 (1.50)	1 5/8 (1.50)	1 3/4 (1.60)	2 1/8 (1.95)	yd (m)
View B	1 1/4 (1.15)	1 1/4 (1.15)	1 3/8 (1.30)	1 3/4 (1.60)	yd (m)
Notions: Thread, scrap piece of fusible interfacing, 3/8" (1 cm) wide clear elastic—1 3/4 yd (1.60 m) for Sizes 1X & 2X, 2 yd (1.85 m) for sizes 3X & 4X.					