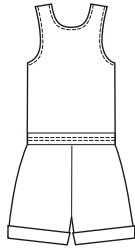


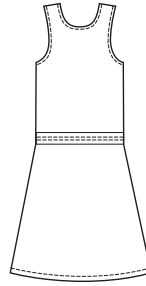


Misses' romper and jumper have bust darts, deep scoop neckline, inset at hip with drawstring and front button closure. Neckline and armholes are finished with bias cut self fabric bindings. View A romper has pleats on front shorts, side pockets, and cuffs at bottom edges of legs. View B jumper has a slight A-line skirt.

VIEW A Back



VIEW B Back



A



B

PANTS

KWIK·SEW®
3530 price

MISSES' ROMPER & JUMPER
 Sizes: XS-S-M-L-XL

DESIGNED FOR LIGHT TO MEDIUM WOVEN FABRICS

Suggested Fabrics: Linen, lightweight denim, twill, cotton types, rayon and blends.

Size	XS	S	M	L	XL	
Finished Inside Leg Seam						
View A	5 1/2" (14 cm)—All Sizes					
Finished Length of Skirt from Natural Waist						
View B	23" (58 cm)—All Sizes (Does Not Allow for Blousing.)					
Material Required: Fabric requirement allows for nap, one-way design or shading. Extra fabric may be needed to match design or for shrinkage.						
Fabric 60" (152 cm) Wide						
View A	2 (1.85)	2 (1.85)	2 1/8 (1.95)	2 1/8 (1.95)	2 3/8 (2.20)	yd (m)
View B	1 3/4 (1.60)	1 7/8 (1.75)	1 7/8 (1.75)	2 (1.85)	2 (1.85)	yd (m)
Fabric 45" (115 cm) Wide						
View A	2 5/8 (2.40)	2 3/4 (2.55)	2 7/8 (2.65)	3 (2.75)	3 1/8 (2.85)	yd (m)
View B	2 3/4 (2.55)	2 7/8 (2.65)	2 7/8 (2.65)	3 (2.75)	3 (2.75)	yd (m)
Fusible Interfacing 24" (60 cm) Wide						
View A & B	3/8 (0.35)	1/2 (0.50)	1/2 (0.50)	1/2 (0.50)	1/2 (0.50)	yd (m)
Notions: Thread, six 3/4" (20 mm) buttons.						