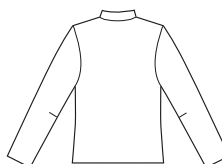


Misses' semi-fitted unlined jackets have bust darts, angled front edges, collar with buttonhole openings in seams, and front edges finished with facings. Fronts overlap with button on inside and decorative button on outside. View A has full length sleeves and shaped bottom edge. View B has three-quarter length sleeves and bottom edge is straight.

VIEW A Back



VIEW B Back



**KWIK·SEW®**  
**3531** price

**MISSSES' JACKETS** DESIGNED FOR MEDIUM WEIGHT WOVEN FABRICS  
 Sizes: XS-S-M-L-XL Suggested Fabrics: Cotton, linen, silk and rayon suitings, tweed, twill, denim, brocade, jacquard

Size	XS	S	M	L	XL	
Finished Length at Center Back from Neckline						
View A	22 (56)	22 3/4 (58)	23 1/2 (60)	24 1/2 (62)	25 1/4 (64)	" (cm)
View B	19 (48)	19 3/4 (50)	20 1/2 (52)	21 1/2 (54)	22 1/4 (56)	" (cm)
<b>Material Required:</b> Fabric requirement allows for nap, one-way design or shading. Extra fabric may be needed to match design or for shrinkage.						
<b>Fabric 60" (152 cm) Wide</b>						
View A	1 3/4 (1.60)	1 7/8 (1.75)	1 7/8 (1.75)	1 7/8 (1.75)	2 (1.85)	yd (m)
View B	1 1/2 (1.40)	1 1/2 (1.40)	1 5/8 (1.50)	1 5/8 (1.50)	1 3/4 (1.60)	yd (m)
<b>Fabric 45" (115 cm) Wide</b>						
View A	2 1/2 (2.30)	2 1/2 (2.30)	2 5/8 (2.40)	2 5/8 (2.40)	2 3/4 (2.55)	yd (m)
View B	2 1/8 (1.95)	2 1/4 (2.10)	2 3/8 (2.20)	2 3/8 (2.20)	2 1/2 (2.30)	yd (m)
<b>Fusible Interfacing 24" (60 cm) Wide</b>						
View A	1 3/4 (1.60)	1 3/4 (1.60)	1 7/8 (1.75)	1 7/8 (1.75)	2 (1.85)	yd (m)
View B	1 3/8 (1.30)	1 1/2 (1.40)	1 1/2 (1.40)	1 1/2 (1.40)	1 5/8 (1.50)	yd (m)
<b>Notions:</b> Thread, one 1 1/4" (32 mm) button, one 1 1/4" (32 mm) inside button (will not show).						