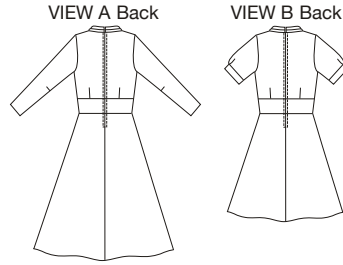


Misses' fitted dresses have V-neckline, shaped empire waist inset, bias cut front bodice with soft pleats along neckline and tucks at bust seam, flared skirt, and center back zipper. View A has full length sleeves. View B has short sleeves with tucks and cuffs.



DRESSES

**KWIK·SEW®**  
price **3539**

DESIGNED FOR SOFT LIGHTWEIGHT WOVEN FABRIC

Suggested Fabrics: Crepe, georgette, plain weave silk and silk types, challis

**MISSSES' DRESSES**

Sizes: XS-S-M-L-XL

Size	XS	S	M	L	XL	
Finished Length of Skirt from Waist						
View A	34" (86 cm)—All Sizes					
View B	24" (61 cm)—All Sizes					
<b>Material Required:</b> Fabric requirement allows for nap, one-way design or shading. Extra fabric may be needed to match design or for shrinkage.						
<b>Fabric 60" (152 cm) Wide</b>						
View A	2¾ (2.55)	2¾ (2.55)	3¼ (3.00)	3¼ (3.00)	3¾ (3.10)	yd (m)
View B	2¼ (2.10)	2¼ (2.10)	2¾ (2.20)	2¾ (2.20)	2¾ (2.20)	yd (m)
<b>Fabric 45" (115 cm) Wide</b>						
View A	3½ (3.20)	3½ (3.20)	not suitable	not suitable	not suitable	yd (m)
View B	2¾ (2.55)	2¾ (2.65)	2⅞ (2.65)	3½ (2.85)	3¼ (3.00)	yd (m)
<b>Notions:</b> Thread, one 22" (55 cm) zipper, two hook & eye sets.						