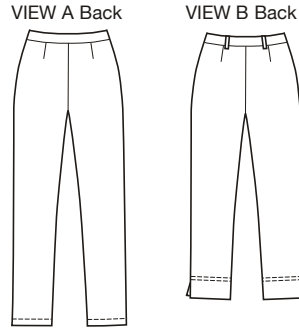


Misses' very close fitting slim leg pants have fly zipper, waistband with button or snap closure, and optional pockets and belt loops. View A are full length. View B are cropped and have hemline slits.



PANTS

FOR STRETCH FABRICS

KWIK·SEW®
price **3540**

DESIGNED FOR STRETCH WOVEN & KNIT FABRICS WITH THE STRETCH ON CROSSWISE GRAIN

Suggested Fabrics: Stretch twill, stretch poplin, stretch denim, double knit

MISSSES' PANTS
Sizes: XS-S-M-L-XL

Size	XS	S	M	L	XL	
Finished Inside Leg Seam						
View A	30" (76 cm)—All Sizes					
View B	23 1/2" (59 cm)—All Sizes					
Material Required:	Fabric requirement allows for nap, one-way design or shading. Extra fabric may be needed to match design or for shrinkage.					
Fabric 60" (152 cm) Wide						
View A	1 1/2 (1.40)	1 1/2 (1.40)	1 3/4 (1.60)	1 7/8 (1.75)	2 1/8 (1.95)	yd (m)
View B	1 3/8 (1.30)	1 3/8 (1.30)	1 5/8 (1.50)	1 3/4 (1.60)	2 (1.85)	yd (m)
Fabric 45" (115 cm) Wide						
View A	2 3/8 (2.20)	2 3/8 (2.20)	2 1/2 (2.30)	2 3/4 (2.55)	2 7/8 (2.65)	yd (m)
View B	2 1/8 (1.95)	2 1/8 (1.95)	2 1/4 (2.10)	2 5/8 (2.40)	2 5/8 (2.40)	yd (m)
Fusible Interfacing 24" (60 cm) Wide						
View A or B	1 (0.95)	1 1/8 (1.05)	1 1/4 (1.15)	1 1/4 (1.15)	1 3/8 (1.30)	yd (m)
Notions:	Thread. One button or snap, one zipper—7" (18 cm) for sizes XS,S & M, 9" (22 cm) for sizes L & XL (Purchase suggested length of zipper or longer—zipper will be trimmed.)					