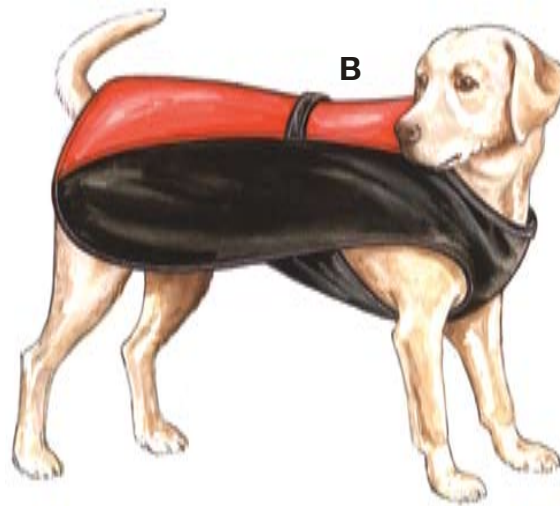
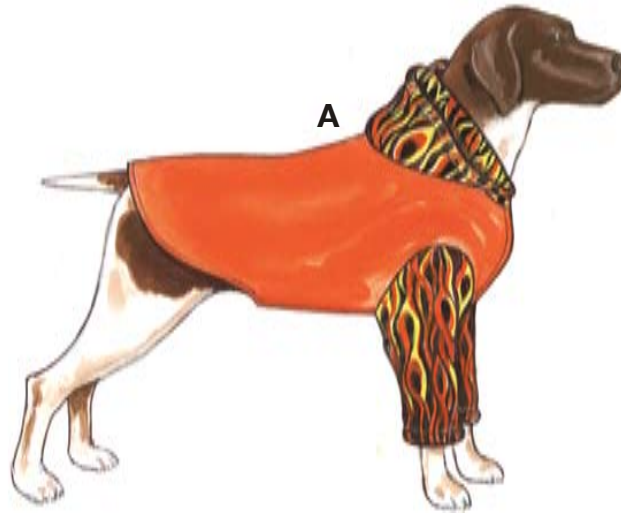
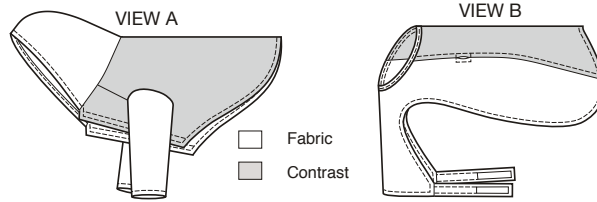




Pet coats in five sizes. View A is lined has Velcro® closure at chest, hood and sleeves from heavy knit or fleece fabric. View A pull-over coat has contrast center back panel, front panels with straps that wrap and close over back with Velcro®. Neckline is finished with self fabric bias cut binding.



GIFTS & THINGS

**KWIK·SEW®**  
**3544** price

**PET COATS**

Sizes: XS-S-M-L-XL

VIEW A DESIGNED FOR HEAVY STRETCH KNITS such as Polarfleece®, sweatshirt fleece  
 VIEW B & CONTRAST FABRIC VIEW A DESIGNED FOR WOVEN FABRICS  
 Suggested Fabrics: Windbreaker fabrics, water repellent fabrics, nylon

**Body Measurements:**

Size	XS	S	M	L	XL	" (cm)
Back Neck to Base of Tail	8-10 (20-25)	12-14 (30-35)	16-18 (40-45)	20-22 (50-56)	24-26 (61-66)	" (cm)

**Material Required:** Extra fabric may be needed to match design or for shrinkage.

**Fabric 60" (152 cm) Wide**

View A Fabric	1/2 (0.50)	5/8 (0.60)	3/4 (0.70)	1 (0.95)	1 1/8 (1.05)	yd (m)
---------------	------------	------------	------------	----------	--------------	--------

**Fabric 45" (115 cm) or 60" (152 cm) Wide**

View A Contrast	1/2 (0.50)	5/8 (0.60)	3/4 (0.70)	7/8 (0.80)	1 (0.95)	yd (m)
View B Fabric	7/8 (0.80)	1 1/8 (1.05)	1 1/2 (1.40)	1 3/4 (1.60)	2 (1.85)	yd (m)
View B Contrast	1/2 (0.50)	5/8 (0.60)	3/4 (0.70)	7/8 (0.80)	1 (0.95)	yd (m)

**Notions:** Thread. View A: Sizes XS-S—12" (30 cm) of 3/4" (2 cm) wide Velcro®; Sizes M-L & XL—19" (50 cm) of 1 1/2" (4 cm) wide Velcro®.  
 View B: Sizes XS-S—6" (15 cm) of 3/4" (2 cm) wide Velcro®; Sizes M-L & XL—8" (20 cm) of 1 1/2" (4 cm) wide Velcro®.