

Size	8	10	12	14	16	" (cm)
Finished Length at Center Back	27 (68)	28 (71)	29½ (75)	31 (79)	32½ (83)	" (cm)
Pillowcase Fits Standard Pillow	20" x 26" (50 cm x 65 cm)					
Material Required: Fabric requirement allows for nap, one-way design or shading. Extra fabric may be needed to match design or for shrinkage.						
Fabric 60" (152 cm) Wide						
Sleep shirt	1½ (1.05)	1½ (1.05)	1¼ (1.15)	1¼ (1.15)	1¼ (1.15)	yd (m)
Pillowcase	1½ yd (1.05 m)—One Size					
Fabric 45" (115 cm) Wide						
Sleep shirt	1½ (1.05)	1⅞ (1.75)	2 (1.85)	2 (1.85)	2⅝ (1.95)	yd (m)
Pillowcase	1¼ yd (1.15 m)—One Size					
Notions: Thread.						

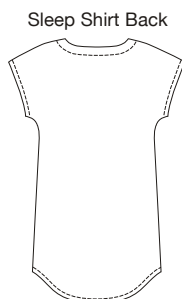


3551

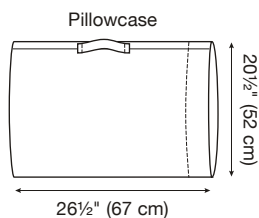
GIRLS' SLEEP SHIRT & PILLOWCASE
8-10-12-14-16

Designed for soft lightweight woven & knit fabrics
Suggested Fabrics: Cotton, cotton types, flannel, interlock, jersey, single knit.
See pattern envelope for more info.

Girls' loose fitting sleep shirt has round neckline finished with facing and shaped hemmed bottom. Front and back extend to form cap sleeves. "Take along" pillowcase has handle and fits standard size pillow. Sleep shirt and pillowcase are very easy to make and have special easy-to-follow sewing instructions.



Sleep Shirt Back



Pillowcase

