

Size XS S M L XL

Finished Length at Center Back from Natural Waist

View A 20" (51 cm)—All Sizes NOTE: Finished length may vary due to bias cut

View B 12" (31 cm)—All Sizes

Material Required: Fabric requirement allows for nap, one-way design or shading.
Extra fabric may be needed to match design or for shrinkage.

Fabric 60" (152 cm) Wide

View A 2 (1.85) 2 (1.85) 2½ (1.95) 2¼ (2.10) 2¼ (2.10) yd (m)

View B 1⅝ (1.50) 1¾ (1.60) 1¾ (1.60) 1⅞ (1.75) 1⅞ (1.75) yd (m)

Fabric 45" (115 cm) Wide

View A 2 (1.85) 2 (1.85) 2½ (1.95) 2¼ (2.10) 2½ (2.30) yd (m)

View B 1⅝ (1.50) 1¾ (1.60) 1⅞ (1.75) 1⅞ (1.75) 2 (1.85) yd (m)

Notions: Thread, ¼ yd (0.25 m) of ¼" (6 mm) wide elastic, 2 yd (1.85 m) of ⅛" (3 mm) wide elastic, scrap piece of fusible interfacing.



price **3556**

MISSES' TOP & TUNIC
XS-S-M-L-XL

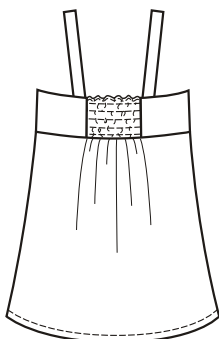
Designed for lightweight woven fabrics,

Suggested Fabrics: Cotton, cotton types, linen, challis, silk, broadcloth, chambray, rayon, rayon blends.

See pattern envelope for more info.

Misses' Top and Tunic have V-neckline, empire waist with ties in casing, center front gathered with elastic, shoulder straps, elastic shirring on back, and bias cut skirt.

VIEW A Back



VIEW B Back

