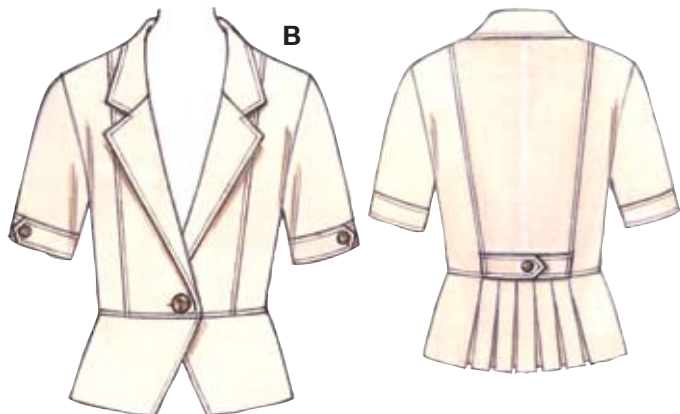


Size	XS	S	M	L	XL	
Finished Length at Center Back						" (cm)
View A & B	21 (53)	21½ (55)	22 (56)	22½ (58)	23½ (59)	
Material Required: Fabric requirement allows for nap, one-way design or shading. Extra fabric may be needed to match design or for shrinkage.						
Fabric 60" (152 cm) Wide						
View A	1¾ (1.60)	1⅞ (1.75)	2 (1.85)	2 (1.85)	2½ (1.95)	yd (m)
View B	1¾ (1.60)	1¾ (1.60)	1⅞ (1.75)	2 (1.85)	2 (1.85)	yd (m)
Fabric 45" (115 cm) Wide						
View A	2⅜ (2.20)	2⅜ (2.20)	2½ (2.30)	2½ (2.30)	2⅝ (2.40)	yd (m)
View B	2⅜ (2.20)	2⅜ (2.20)	2½ (2.30)	2⅝ (2.40)	2¾ (2.55)	yd (m)
Fusible Interfacing 24" (60 cm) Wide						
View A	1 (0.95)	1 (0.95)	1 (0.95)	1½ (1.05)	1½ (1.05)	yd (m)
View B	1½ (1.05)	1½ (1.05)	1½ (1.05)	1½ (1.05)	1½ (1.05)	yd (m)
Notions: Thread. View A: One 1" (25 mm) button. View B: One 1" (25 mm) button, three ¾" (20 mm) buttons.						



price **3558** MISSES' JACKETS
XS-S-M-L-XL

Designed for medium weight woven fabric,
Suggested Fabrics: Cotton, cotton types, twill, denim, gabardine, linen, suitweight silks and blends.
See pattern envelope for more info.

Misses' fitted unlined jackets have collar and lapel, front and back princess seams, peplum with shaped front edges, and one button closure. View A has full length sleeves. View B has short sleeves with cuffs, back belt with button and back peplum has box pleats.

