

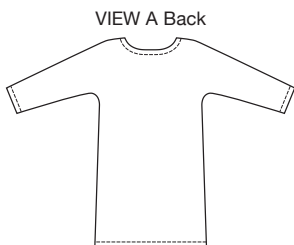
Size	XS	S	M	L	XL	
Finished Length at Center Back from Neckline						
View A	33½ (85)	34 (86)	34¼ (87)	34½ (88)	35 (89)	" (cm)
View B	29½ (75)	30 (76)	30½ (77)	30¾ (78)	31 (79)	" (cm)
<b>Material Required:</b> Fabric requirement allows for nap, one-way design or shading. Extra fabric may be needed to match design or for shrinkage.						
<b>Fabric 60" (152 cm) Wide</b>						
View A	2¼ (2.10)	2¼ (2.10)	2¼ (2.10)	2¾ (2.20)	2¾ (2.20)	yd (m)
View B	1½ (1.05)	1¼ (1.15)	1¼ (1.15)	1¼ (1.15)	1¼ (1.15)	yd (m)
<b>Fusible Interfacing 24" (60 cm) Wide</b>						
View A & B	¾ (0.35)	¾ (0.35)	¾ (0.35)	¾ (0.35)	¾ (0.35)	yd (m)
<b>Notions:</b> Thread.						



price **3559** MISSES' DRESSES  
XS-S-M-L-XL

**Designed for stretch knits only with 25% stretch,**  
Suggested Fabrics: Interlock, jersey, textured knits, matte jersey, stretch velvet.  
**See pattern envelope for more info.**

Misses' pull-over dresses have scoop neckline finished with facing and gathers on front at yoke seam. View A has full length dolman sleeves. View B has extended shoulders forming cap sleeves.



**KWIK & EASY™**