

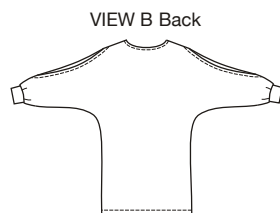
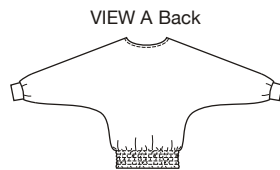
Size	XS	S	M	L	XL	
Finished Length at Center Back						
View A	19½ (49)	20¼ (51)	21 (53)	21¾ (55)	22½ (57)	" (cm)
View B	26 (66)	27 (68)	28 (70)	28¾ (72)	29½ (75)	" (cm)
Material Required: Fabric requirement allows for nap, one-way design or shading. Extra fabric may be needed to match design or for shrinkage.						
Fabric 60" (152 cm) Wide						
View A	1½ (1.40)	1½ (1.40)	1½ (1.40)	1⅝ (1.50)	1⅝ (1.50)	yd (m)
View B	1¾ (1.60)	1¾ (1.60)	1¾ (1.60)	1⅞ (1.75)	1⅞ (1.75)	yd (m)
Fusible Interfacing 24" (60 cm) Wide						
View A & B	¼ (0.25)	¼ (0.25)	¼ (0.25)	¼ (0.25)	¼ (0.25)	yd (m)
Notions: Thread. View A: ¼" (6 mm) wide elastic—2½ yd (2.30 m) for sizes XS & S; 3 yd (2.75 m) for sizes M & L; 3¼ yd						



price **3568** MISSES' TOPS
XS-S-M-L-XL

Designed for stretch knits only with 25% stretch across the grain,
Suggested Fabrics: Interlock, jersey, matte jersey, stretch terry, textured
knits, panne.
See pattern envelope for more info.

Misses' dolman sleeve pull-over tops have boat neckline finished with facing and full
length sleeves with cuffs. View A has wide hem with three rows of elastic in casings.
View B is tunic length and sleeves have openings in center sleeve seams.



KWIK & EASY™

