

Size	S	M	L	XL	XXL	
Finished Length at Center Back						
View A & B	29 (73)	29 (73)	29 (73)	31 (78)	31 (78)	" (cm)
<b>Material Required:</b> Fabric requirement allows for nap, one-way design or shading. Extra fabric may be needed to match design or for shrinkage.						
<b>Fabric 60" (152 cm) Wide</b>						
View A or B Fabric	1½ (1.40)	1½ (1.40)	1½ (1.40)	1½ (1.50)	1½ (1.50)	yd (m)
View A Contrast	1 (0.95)	1 (0.95)	1 (0.95)	1 (0.95)	1 (0.95)	yd (m)
View B Contrast	¾ (0.70)	¾ (0.70)	¾ (0.70)	¾ (0.80)	¾ (0.80)	yd (m)
<b>Fabric 45" (115 cm) Wide</b>						
View A or B Fabric	1¾ (1.60)	1¾ (1.60)	2 (1.85)	2½ (1.95)	2½ (1.95)	yd (m)
View A Contrast	1 (0.95)	1 (0.95)	1 (0.95)	1½ (1.30)	1½ (1.30)	yd (m)
View B Contrast	1¼ (1.15)	1¼ (1.15)	1¼ (1.15)	1½ (1.30)	1½ (1.30)	yd (m)
<b>Woven fabric for inside collar &amp; zipper shield 29" (75 cm) Wide (minimum width)</b>						
View B	¾ (0.80)	¾ (0.80)	¾ (0.80)	¾ (0.80)	¾ (0.80)	yd (m)
<b>Pocket Lining 60" (152 cm) Wide</b>						
View A or B	¾ (0.35)	¾ (0.35)	¾ (0.35)	¾ (0.35)	¾ (0.35)	yd (m)
<b>Pocket Lining 45" (115 cm) Wide</b>						
View A	¾ (0.70)	¾ (0.70)	¾ (0.70)	¾ (0.70)	¾ (0.70)	yd (m)
View B	¾ (0.35)	¾ (0.35)	¾ (0.35)	¾ (0.35)	¾ (0.35)	yd (m)
<b>Fusible Interfacing 24" (60 cm) Wide</b>						
View A or B	½ (0.15)	½ (0.15)	½ (0.15)	½ (0.15)	½ (0.15)	yd (m)
<b>Notions:</b> Thread, one separating zipper—28" (70 cm) for sizes S-M-L; 30" (75 cm) for sizes XL-XXL, one drawstring, ¾ yd (0.70 m) of ¾" (2 cm) wide elastic. VIEW A: Three 7" (18 cm) zippers. VIEW B: Two 7" (18 cm) zippers.						



price **3569**

**MEN'S JACKETS**  
S-M-L-XL-XXL

Designed for lightweight to medium weight woven fabric  
Suggested Fabrics: Windbreaker fabric, Supplex, poplin, water repellent cotton and blends.

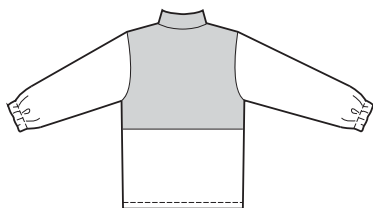
View B also in heavy knit such as Polarfleece®.

Pocket lining—lightweight woven or knit fabric, athletic mesh.

See pattern envelope for more info.

Men's jackets have collar, front zipper with zipper shield, lower front pockets with zippers, sleeves with elastic in casing at wrist, and casing at bottom edge with drawstring. Collar, upper front and upper back are from contrast fabric. View A has front yoke with piping, and a left front chest pocket with zipper.

VIEW A & B Back



□ Fabric  
■ Contrast

