

Size	S	M	L	XL	XXL	
Finished Length at Center Back from Neckline						
View A & B	26½ (68)	27½ (70)	28½ (72)	29½ (75)	30½ (77)	" (cm)
Material Required: Fabric requirement allows for nap, one-way design or shading. Extra fabric may be needed to match design or for shrinkage.						
Fabric 60" (152 cm) Wide						
View A	1¾ (1.60)	1¾ (1.60)	1⅞ (1.75)	1⅞ (1.75)	2 (1.85)	yd (m)
View B	1¾ (1.60)	1¾ (1.60)	1⅞ (1.75)	2 (1.85)	2⅞ (1.95)	yd (m)
Contrast 18" (46 cm) Wide (Minimum Width)						
View A	¾ (0.70)	¾ (0.70)	¾ (0.70)	¾ (0.70)	¾ (0.70)	yd (m)
Notions: Thread, scrap piece of fusible interfacing. VIEW B: One 9" (22 cm) zipper.						

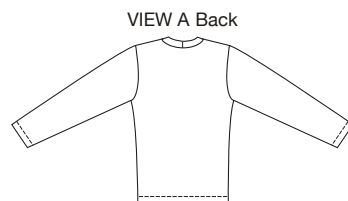
*Polartec®, PowerStretch® trademark of Malden Mills.



price  **3570** MEN'S SHIRTS
S-M-L-XL-XXL

Designed for stretch knits only with 50% stretch across the grain
Suggested Fabrics: Fleece with Spandex Lycra®, activewear fabrics with Spandex Lycra®, Polartec®, PowerStretch®.
See pattern envelope for more info.
*Polartec®, PowerStretch® trademark of Malden Mills.

Men's close fitting pull-over shirts have full length sleeves and wrap around side seams. View A has neckband, and insets on front from contrast fabric. View B has stand-up collar and front zipper opening.



KWIK & EASY™



MEN'S