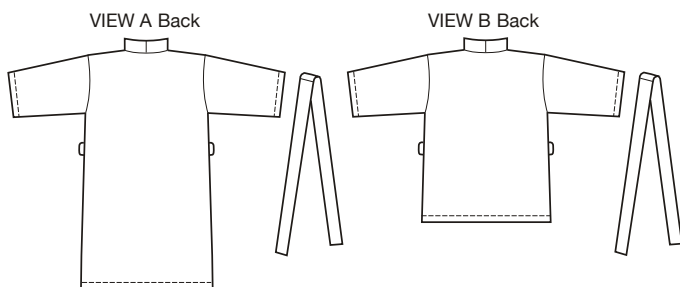




PLUS SIZES



price **3587** **WOMEN'S ROBES**
1X-2X-3X-4X

Designed for lightweight woven fabrics
Suggested Fabrics: Cotton, cotton types, broadcloth, chambray, flannel, challis.

Women's kimono-style wrap robe has extended shoulders, patch pockets, front and neckline band, and tie belt. Robe is very easy to sew and has special easy-to-follow sewing instructions.

Size	1X	2X	3X	4X	
Finished Length at Center Back					
View A	42 1/2 (108)	42 3/4 (109)	43 1/4 (110)	43 3/4 (111)	" (cm)
View B	36 1/2 (92)	37 (94)	37 1/2 (95)	37 3/4 (96)	" (cm)
Material Required: Fabric requirement allows for nap, one-way design or shading. Extra fabric may be needed to match design or for shrinkage.					
Fabric 60" (152 cm) Wide					
View A	3 1/4 (3.00)	3 1/4 (3.00)	3 3/8 (3.10)	3 3/8 (3.10)	yd (m)
View B	3 (2.75)	3 1/8 (2.85)	3 1/4 (3.00)	3 1/4 (3.00)	yd (m)
Fabric 45" (115 cm) Wide					
View A	4 (3.70)	4 (3.70)	4 1/8 (3.80)	5 1/8 (4.70)	yd (m)
View B	3 7/8 (3.55)	3 7/8 (3.55)	4 (3.70)	4 7/8 (4.50)	yd (m)
Notions: Thread, scrap piece of fusible interfacing.					

ESPECIALLY DESIGNED FOR THE BEGINNER SEWER!