

Standard Body Measurements:

Size	XS	S	M	L	XL	
Bust	31½-32½ (80-83)	34-35½ (86-90)	37-38½ (94-98)	40-41½ (102-106)	43-45 (110-114)	" (cm)
Hip	32¼-34 (82-86)	35½-37 (90-94)	38½-40 (98-102)	41½-43½ (106-110)	45-47 (115-120)	" (cm)
Back Waist Length	15½ (39)	16 (41)	16½ (42)	17 (43)	17 (43)	" (cm)
Finished Length from Natural Waist	View A & B 6" (15 cm)—All Sizes					

Material Required: Fabric requirement allows for nap, one-way design or shading. Extra fabric may be needed to match design or for shrinkage.

Fabric 60" (152 cm) Wide

View A	1½ (1.40)	1½ (1.40)	1½ (1.40)	1½ (1.40)	1½ (1.40)	yd (m)
View B	1½ (1.05)	1½ (1.05)	1½ (1.05)	1½ (1.05)	1½ (1.15)	yd (m)

Fabric 45" (115 cm) Wide

View A	1½ (1.40)	1¾ (1.75)	1¾ (1.75)	2½ (1.95)	2¼ (2.10)	yd (m)
View B	1½ (1.05)	1¾ (1.60)	1¾ (1.60)	1¾ (1.75)	1¾ (1.75)	yd (m)

Fusible Interfacing 24" (60 cm) Wide

View A	¼ (0.25)	¼ (0.25)	¼ (0.25)	¼ (0.25)	¼ (0.25)	yd (m)
View B	⅜ (0.35)	⅜ (0.35)	⅜ (0.35)	⅜ (0.35)	⅜ (0.35)	yd (m)

Notions: Thread, one ⅜" (10 mm) button.



price **3600**

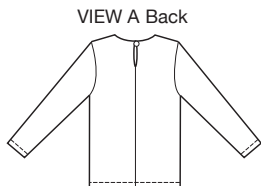
MISSES' TOPS
XS-S-M-L-XL

Designed for lightweight woven fabric

Suggested Fabrics: Cotton, cotton types, silk, silk-like fabrics, chameuse, challis, handkerchief linen.

See pattern envelope for more info.

Misses' pull-over tops have bust darts and neckline finished with facing. View A has round neckline, center back slit with button and loop closure, and full length sleeves. View B has scoop neckline and short sleeves.



KWIK & EASY™