

Standard Body Measurements:

Size	XS	S	M	L	XL	
Bust	31½-32½ (80-83)	34-35½ (86-90)	37-38½ (94-98)	40-41½ (102-106)	43-45 (110-114)	" (cm)
Hip	32¼-34 (82-86)	35½-37 (90-94)	38½-40 (98-102)	41½-43½ (106-110)	45-47 (115-120)	" (cm)
Back Waist Length	15½ (39)	16 (41)	16½ (42)	17 (43)	17 (43)	" (cm)
Finished Length from Natural Waist						
View A	12½ (32)	13 (33)	13½ (34)	14 (36)	15 (38)	" (cm)
View B	8¾ (22)	9 (23)	9¼ (24)	9¾ (25)	10¼ (26)	" (cm)

Material Required: Fabric requirement allows for nap, one-way design or shading.

Extra fabric may be needed to match design or for shrinkage.

Fabric 60" (152 cm) Wide

View A Fabric	1⅝ (1.50)	1⅝ (1.50)	1¾ (1.60)	1¾ (1.60)	1¾ (1.60)	yd (m)
Contrast	⅜ (0.35)	⅜ (0.35)	⅜ (0.35)	⅜ (0.35)	⅜ (0.35)	yd (m)
View B	1⅜ (1.30)	1⅜ (1.30)	1½ (1.40)	1½ (1.40)	1½ (1.40)	yd (m)

Fabric 45" (115 cm) Wide

View A Fabric	1¾ (1.60)	1⅞ (1.75)	1⅞ (1.75)	2⅝ (2.40)	2¾ (2.55)	yd (m)
Contrast	⅜ (0.35)	⅜ (0.35)	⅜ (0.35)	⅜ (0.35)	⅜ (0.35)	yd (m)
View B	1¾ (1.60)	1⅞ (1.75)	1⅞ (1.75)	2¼ (2.10)	2⅝ (2.20)	yd (m)

Fusible Interfacing 24" (60 cm) Wide

View A or B	½ (0.50)	½ (0.50)	½ (0.50)	½ (0.50)	½ (0.50)	yd (m)
-------------	----------	----------	----------	----------	----------	--------

Notions: Thread.



price **3601**

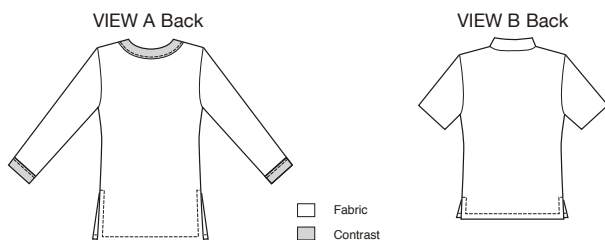
MISSES' TOPS
XS-S-M-L-XL

Designed for lightweight woven fabrics

Suggested Fabrics: Cotton, cotton types, linen, silk, silk types, challis.

See pattern envelope for more info.

Misses' pull-over tops have bust darts and side hemline slits. View A tunic has full length sleeves, round neckline with front slit, and neckband and sleeve bands from contrast fabric. View B has front slit, collar, and short sleeves.



KWIK & EASY™