



price **3603**

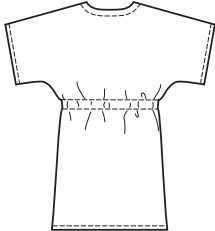
MISSES' TOPS
XS-S-M-L-XL

Designed for lightweight woven fabric

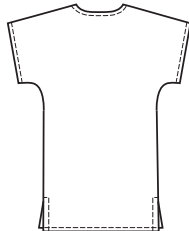
Suggested Fabrics: Cotton, cotton types, broadcloth, lawn, batiste, handkerchief linen.

Misses' tunic length tops have V-neckline and extended shoulders forming sleeves. View A has open front, casing with self fabric tie under bust, and neckline and front edges are finished with facings. View B pull-over style top has side hemline slits and neckline is finished with facing. Tops are very easy to make and have special easy-to-follow instructions.

VIEW A Back



VIEW B Back



Standard Body Measurements:

Size	XS	S	M	L	XL	
Bust	31½-32½ (80-83)	34-35½ (86-90)	37-38½ (94-98)	40-41½ (102-106)	43-45 (110-114)	" (cm)
Hip	32¼-34 (82-86)	35½-37 (90-94)	38½-40 (98-102)	41½-43½ (106-110)	45-47 (115-120)	" (cm)
Back Waist Length	15½ (39)	16 (41)	16½ (42)	17 (43)	17 (43)	" (cm)
Finished Length at Center Back						
View A & B	30 (76)	30¾ (78)	31½ (80)	32¼ (82)	33 (84)	" (cm)

Material Required: Fabric requirement allows for nap, one-way design or shading. Extra fabric may be needed to match design or for shrinkage.

Fabric 60" (152 cm) Wide

View A	1⅞ (1.75)	2 (1.85)	2 (1.85)	2⅛ (1.95)	2¼ (2.10)	yd (m)
View B	1⅞ (1.75)	2 (1.85)	2 (1.85)	2 (1.85)	2⅞ (1.95)	yd (m)

Fabric 45" (115 cm) Wide

View A	2⅝ (2.40)	2¾ (2.55)	2⅞ (2.65)	2⅞ (2.65)	3 (2.75)	yd (m)
View B	2¼ (2.10)	2¼ (2.10)	2⅝ (2.20)	2⅝ (2.20)	2½ (2.30)	yd (m)

Fusible Interfacing 24" (60 cm) Wide

View A	1 (0.95)	1 (0.95)	1 (0.95)	1 (0.95)	1⅞ (1.05)	yd (m)
View B	½ (0.50)	½ (0.50)	½ (0.50)	½ (0.50)	½ (0.50)	yd (m)

Notions: Thread.