

**Standard Body Measurements:**

| Size                           | XS              | S              | M               | L                 | XL              |        |
|--------------------------------|-----------------|----------------|-----------------|-------------------|-----------------|--------|
| Bust                           | 31½-32½ (80-83) | 34-35½ (86-90) | 37-38½ (94-98)  | 40-41½ (102-106)  | 43-45 (110-114) | " (cm) |
| Waist                          | 22½-23½ (57-60) | 24¾-26 (63-66) | 27½-29 (70-74)  | 31-33 (79-84)     | 35-37 (89-94)   | " (cm) |
| Hip                            | 32¼-34 (82-86)  | 35½-37 (90-94) | 38½-40 (98-102) | 41½-43½ (106-110) | 45-47 (115-120) | " (cm) |
| Back Waist Length              | 15½ (39)        | 16 (41)        | 16½ (42)        | 17 (43)           | 17 (43)         | " (cm) |
| Finished Length at Center Back |                 |                |                 |                   |                 |        |
| View A & B                     | 22 (56)         | 22¼ (57)       | 23 (58)         | 23½ (59)          | 24 (61)         | " (cm) |

**Material Required:** Fabric requirement allows for nap, one-way design or shading.

Extra fabric may be needed to match design or for shrinkage.

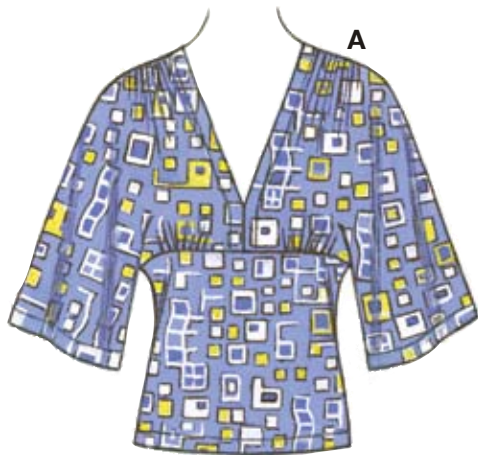
**Fabric 60" (152 cm) Wide**

|        |           |           |           |           |           |        |
|--------|-----------|-----------|-----------|-----------|-----------|--------|
| View A | 1½ (1.05) | 1¾ (1.20) | 1¾ (1.20) | 1½ (1.30) | 1½ (1.30) | yd (m) |
| View B | ¾ (0.80)  | ¾ (0.80)  | ¾ (0.80)  | ¾ (0.80)  | ¾ (0.80)  | yd (m) |

**Fusible Interfacing 24" (60 cm) Wide**

|             |          |          |          |          |          |        |
|-------------|----------|----------|----------|----------|----------|--------|
| View A or B | ½ (0.50) | ½ (0.50) | ½ (0.50) | ½ (0.50) | ½ (0.50) | yd (m) |
|-------------|----------|----------|----------|----------|----------|--------|

**Notions:** Thread. View B: Three ½" (12 mm) buttons.



price



**3616**

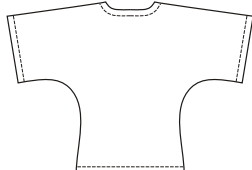
**MISSES' TOPS**

XS-S-M-L-XL

**Designed for stretch knits only with 35% stretch across the grain**  
 Suggested Fabrics: Interlock, textured knits, stretch velvet, stretch velour, fabric with Spandex Lycra®, matte jersey.  
**See pattern envelope for more info.**

Misses' close fitting tops have V-neckline finished with facings, and gathers on front at shoulders and under bust. View A has kimono style sleeves. View B has decorative three button and loop closure on front, and extended shoulders forming cap sleeves.

VIEW A Back



VIEW B Back

