

Standard Body Measurements:

Size	XS	S	M	L	XL	
Bust	31½-32½ (80-83)	34-35½ (86-90)	37-38½ (94-98)	40-41½ (102-106)	43-45 (110-114)	" (cm)
Hip	32¼-34 (82-86)	35½-37 (90-94)	38½-40 (98-102)	41½-43½ (106-110)	45-47 (115-120)	" (cm)
Back Waist Length	15½ (39)	16 (41)	16½ (42)	17 (43)	17 (43)	" (cm)
Finished Length at Center Back						
View A	27¾ (70)	28¾ (73)	29¾ (75)	30¾ (78)	31¾ (81)	" (cm)
View B	24 (61)	24¾ (63)	25½ (65)	26¼ (67)	27 (69)	" (cm)

Material Required: Fabric requirement allows for nap, one-way design or shading.

Extra fabric may be needed to match design or for shrinkage.

Fabric 60" (152 cm) Wide

View A	2½ (1.95)	2¼ (2.10)	2¾ (2.20)	2½ (2.30)	2½ (2.30)	yd (m)
View B	1¼ (1.15)	1½ (1.40)	1¾ (1.50)	1¾ (1.60)	1¾ (1.60)	yd (m)

Fabric 45" (115 cm) Wide

View A	2½ (2.30)	2½ (2.30)	3¾ (3.10)	3¾ (3.10)	3¾ (3.35)	yd (m)
View B	1¾ (1.75)	1¾ (1.75)	2 (1.85)	2 (1.85)	2½ (1.95)	yd (m)

Fusible Interfacing 24" (60 cm) Wide

View B	⅝ (0.60)	⅝ (0.60)	⅝ (0.60)	⅝ (0.60)	⅝ (0.60)	yd (m)
--------	----------	----------	----------	----------	----------	--------

Notions: Thread.



WOVEN TOPS



3621

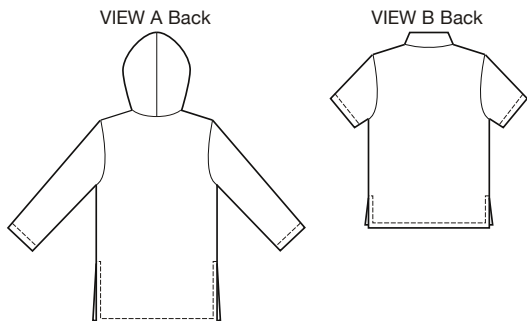
MISSES' TOPS
XS-S-M-L-XL

Designed for lightweight woven fabrics

Suggested Fabrics: Cotton, cotton types, rayon & blends, silk, broadcloth, gauze, linen.

See pattern envelope for more info.

Misses' pull-over tops have bust darts, center front inset and side hemline slits. View A is tunic length, has a double layer hood and full length sleeves. View B has collar and short sleeves.



KWIK & EASY™