

price **3623**

**MISSSES' JACKETS**  
XS-S-M-L-XL

Unlined double breasted jackets have side panels and collar. View A has full length sleeves and pockets in panel seams with welts. View B has three-quarter length sleeves with "bubble cuffs" with tucks.

**FABRICS:** Designed for medium weight woven fabrics.

Suggested Fabrics: Twill, denim, linen, suitings, gabardine, crepe.



**B**



View A Back



View B Back

**STANDARD BODY MEASUREMENTS:**

SIZES:	XS	S	M	L	XL	
<b>Bust</b>	31½-32½	34-35½	37-38½	40-41½	43-45	"
	80-83	86-90	94-98	102-106	110-114	cm
<b>Waist</b>	22½-23½	24¾-26	27½-29	31-33	35-37	"
	57-60	63-66	70-74	79-84	89-94	cm
<b>Hip</b>	32¼-34	35½-37	38½-40	41½-43½	45-47	"
	82-86	90-94	98-102	106-110	115-120	cm
<b>Back Waist Length</b>	15½	16	16½	17	17	"
	39	41	42	43	43	cm
<b>Finished Length at Center Back</b>						
<b>View A</b>	25½	26½	27½	28¼	29	"
	65	67	69	71	73	cm
<b>View B</b>	18	18½	19	19¾	20½	"
	46	47	49	50	52	cm

**MATERIAL REQUIRED:** Fabric requirement allows for nap, one-way design or shading. Extra fabric may be needed to match design or for shrinkage.

SIZES:	XS	S	M	L	XL	
<b>FABRIC 60" (152 cm) WIDE</b>						
<b>View A</b>	1⅞ (1.75)	2 (1.85)	2⅞ (1.95)	2¼ (2.10)	2¼ (2.10)	yd (m)
<b>View B</b>	1¾ (1.60)	1¾ (1.60)	1⅞ (1.75)	1⅞ (1.75)	2 (1.85)	yd (m)

<b>FABRIC 45" (115 cm) WIDE</b>						
<b>View A</b>	2¾ (3.10)	2⅞ (2.65)	2⅞ (2.65)	3 (2.75)	3⅞ (2.85)	yd (m)
<b>View B</b>	2¼ (2.10)	2⅞ (2.20)	2⅞ (2.20)	2½ (2.30)	2⅝ (2.40)	yd (m)

<b>LINING 60" (152 cm) WIDE</b>						
<b>View B</b>	½ (0.50)	½ (0.50)	½ (0.50)	½ (0.50)	½ (0.50)	yd (m)

<b>LINING 45" (115 cm) WIDE</b>						
<b>View B</b>	¾ (0.70)	¾ (0.70)	¾ (0.70)	¾ (0.70)	¾ (0.70)	yd (m)

<b>FUSIBLE INTERFACING 24" (60 cm) WIDE</b>						
<b>View A</b>	1⅞ (1.30)	1⅞ (1.30)	1½ (1.40)	1½ (1.40)	1⅝ (1.50)	yd (m)
<b>View A</b>	1¼ (1.15)	1¼ (1.15)	1¼ (1.15)	1⅞ (1.30)	1⅞ (1.30)	yd (m)

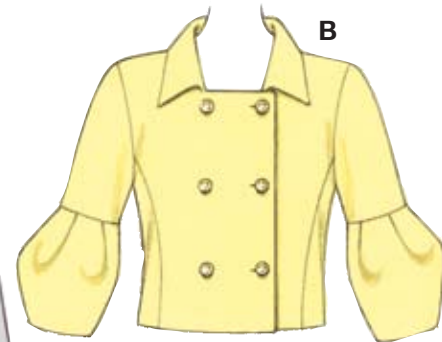
**NOTIONS:** Thread. **View A:** Eight 7/8" (22 mm) buttons, one flat button for inside. **View B:** Six 7/8" (22 mm) buttons, one flat button for inside.



**A**



**A**



**B**